

**P&H RANCHING CO.**  
and  
**CIRCLE G SIMMENTALS  
& ANGUS**

**BOULE  
SALE**



**Saturday, FEBRUARY 20, 2021**  
**1:00 PM - Innisfail Auction Market**



## Welcome to our 2021 Bull Sale

*It is a pleasure to welcome you to the 11th annual P&H Ranching Charolais and Circle G Simmentals & Angus Bull sale. I would like to say thank you to all of our valued customers; those who have supported our annual bull sale or made purchases off the farm. The confidence in our breeding programs is greatly appreciated.*

*In an effort to help you increase your bottom line we have put together an exceptional group of bulls ready to sire calves that will bring a premium on sale day. We are continually adding new genetics to our herd bull line up and this year we are very excited to present offspring from these new sires as well as from some of our most trusted, proven herd sires. We are really excited about the new genetics and eagerly await your approval.*

*Our focus remains the same; we are committed to producing quality, affordable genetics that will positively influence the profitability for the commercial cattleman. We don't follow trends or chase fads but attempt to raise solid functional cattle. We have put together a group of bulls that will get out and cover ground, breed cows and sire calves with loads of performance all without sacrificing calving ease. To assist you with the selection of your bulls we have provided up to date EPD numbers and ultrasound carcass data. These are effective tools to aid in the selection of your bull purchases but we must not forget the importance of structural soundness and phenotype.*

*Garth Gutler of Circle G Simmentals and Angus has once again put together an exceptional group of yearling bulls for this year's sale. His on-going commitment to select superior genetics to pass on to his customer base is second to none and it will certainly show in the group of bulls he has on offer.*

*It is with regret that we will not be offering Ranch Horses in the sale this year given the current restrictions on public gatherings.*

*Furthermore in relation to the state of Covid 19 restrictions on public gatherings we encourage interested parties to view the videos that will be posted on DLMS. We welcome you to drop by our farms or the Auction Market to view the bulls prior to the sale day. We will try to run the sale in the most normal fashion as possible while still respecting the AHS regulations. If you are unable to make it sale day please take advantage of online bidding with DLMS or contact any of the sales staff to bid on your behalf.*

*Sincerely*

*Gorinne Parsonage  
P&H Ranching Co. (NFAC)*

### Sale & Covid 19 Protocol

- With the ever-changing regulations regarding Covid 19 protocol we would like to assure you that every precaution will be taken to adhere to the AHS guidelines presented at the time of the sale
- Our sale has always been a social function however, this year we are restricted to business only and therefore must follow attendance restrictions
- We have various ways to assist you with your purchases; bid in person, internet online bidding or on the phone with any of our sales representatives
- In the event that Covid 19 restrictions prevent us from having our regular live bull sale at IAM we will move to a Farm Gate Timed Auction online sale through DLMS
- We strongly encourage you to give us a call and come view the bulls at the farms prior to the sale
- Check DLMS.com or innisfailauctionmarket.com for any sale updates one week prior to sale day

### Can't make it to the sale? Watch & Bid Online.

With DLMS you can Watch, Listen & Bid on your computer just like you were there with online bidding over the internet

#### Instructions for Viewing And Bidding At the Sale

Visit [www.dlms.ca](http://www.dlms.ca), Fill out the registration form located under registration and sign-up for your free user account to select a username and password.

**BIDDERS** - To be approved as a bidder, Log in and click BUYER APPROVAL tab, select the sale you are interested in bidding at and click sign up.

For more information or for help getting approved Call:

Mark Shologan - 780-699-5082 or DLMS Purebred Team 780.991-3025

Direct Livestock Marketing Systems  
We're Making the Connection

**DLMS**  
[www.dlms.ca](http://www.dlms.ca)

To find an agent or sale near you today  
visit [www.dlms.ca](http://www.dlms.ca)

Purebred Sales • Daily Presort Sales  
Direct Off-farm Sales every Thursdays at 10:00 am

**VIDEOS of the bulls on [dlms.ca](http://dlms.ca) prior to the sale**  
**Updated stats available a few days prior to sale**

# P&H RANCHING CO. LTD. & CIRCLE G SIMMENTALS & ANGUS

## BULL SALE

**February 20, 2021 • 1:00 p.m.**

**Innisfail Auction Market, Innisfail, AB**

**128 BULLS SELL**

**52 CHAROLAIS - 2 Year Olds**

**39 SIMMENTAL 36 ANGUS**

**22 Red Yearlings**

**17 Black Yearlings**

**19 Red Yearlings**

**16 Black Yearlings**

**2 Proven Herdsires**



**SIGHT UNSEEN PURCHASES**

Buyers unable to attend the sale may call or place bids with the owners or sale staff. Buyer satisfaction guaranteed.

**\$100**  
Discount/Bull  
if you Take your  
Bull Home  
Sale Day

Insurance Available Sale Day

Canadian Farm Insurance - Monica Czech - 780-733-7715

Pending Covid rules - Join us for lunch prior to the sale

**Sale Day Phones:**

Corinne Parsonage..... 403-396-9694

Garth Cutler ..... 403-304-0896

Ben Dowling ..... 403-896-8761

Innisfail Auction Market..... 403-227-3166

Auctioneer, Don Raffan..... 250-558-6789

**Ringmen**

Grant Ellefson ..... 403-501-9707

Dean Edge ..... 403-704-0280

**Buyer Representatives**

Danny Daines ..... 403-391-0580

Cletus Sehn ..... 403-634-6415

Robbie Chomiak, Charolais Banner .. 780-336-6424

Peter Raffan..... 250-260-0758

**Bohrson Marketing Services**

Scott Bohrson ..... 403-370-3010

Rob Voice ..... 306-270-6082

Matt Criddle ..... 306-539-6934

**First Class Marketing**

Darnell Fornwald ..... 403-795-8030

Shay Martindale ..... 780-812-4581

**OBI Livestock Ltd**

Mark Holowaychuk ..... 403-896-4990

Roger Peters ..... 403-828-9815

**P&H RANCHING CO. LTD.**

**Corinne Parsonage**

**Ph: 403-396-9694**

email: phranch@telus.net

Innisfail, AB



**CIRCLE G SIMMENTALS & ANGUS**

**Circle G Bulls start on Page 16**

**Garth Cutler Ph: 403-304-0896**

email: circleg@telus.net Lacombe, AB

**EPDs - HOW TO USE THEM**

Expected Progeny Differences...EPDs are a selection tool that provides estimates of the genetic value an animal will pass on to its progeny. They can be used to help ensure that you find the best bull for your needs and long term breeding goals.

**EPD EXPLANATION**

**BW:** Birth Weight - a prediction of sire's ability to transmit birth weight to his progeny...a lower value indicates lighter BW.

**CE:** Calving Ease - A higher value indicates increased calving ease.

**WW:** Weaning Weight - predictor of sire's ability to transmit weaning growth to his progeny.

**YW:** Yearling Weight - predictor of sire's ability to transmit yearling growth to his progeny.

**MCE:** Maternal Calving Ease - Indicates the ease which a sire's daughters calve...a higher value indicates higher calving ease.

**MWT:** Maternal Weaning Weight - Indicates the WW of a bulls daughter's calves when compared to other bull's daughters.

**Milk:** A predictor of sire's genetic merit for milk and mothers ability as expressed in her daughters.

**API:** All-Purpose \$ Index - Evaluates sires for use on the entire cowherd. Includes daughters retained to maintain herd size and the remaining heifers and the steers put on feed with their carcass grade and quality.

**BREED EPD AVERAGES**

**CHAROLAIS**

BW 0.9 WW 44 YW 85 MILK 21 TM 43

**SIMMENTAL**

CE 6.8 BW 3.9 WW 75 YW 110 MCE 3.9 Milk 29 MWWT 66 API 119

**BLACK ANGUS**

CE 3.3 BW 2.1 WW 47 YW 83 MCE 7.0 MILK 22

**RED ANGUS**

CE 2.4 BW 1.2 WW 36 YW 61 MCE 5.4 MILK 23





- PH Advancer 112G is truly a power house of a bull... Length, depth and width he has it all.
- He is flawless in his conformation and comes from a dam with a picture perfect udder
- He ranks in the top 1 % WW and 3% YW and a high ranking for marbling EPD
- His Sire PH 141D was in the top 2% WW and Top 5% YW
- Don't miss out on this one

**1** **PH ADVANCER 112G**  
Polled MC787740 PH 112G 7-Apr-19

BW: 104 lbs		Adj 205: 830 lbs		WPDA: 4.05		365: 1311 lbs				
EPD'S	BW	WW	YW	M	TM	CARCASS	MARB	BF	REA in <sup>2</sup>	%LMY
	2.1	65	114	15	48		4.5	4.29	12.9	64.84

KAYR SANCTION 102A  
**PH ADVANCER 141D**  
LVV CHROME 610X

KEYS WISHBONE 40Y  
**PH WILLOW 2A**  
PH KAYCEE 255P

SVY LIBERTY 128Y  
KAYR MISS 102X  
MSF SKYLARK 617S  
LVV 619S  
KEYS SPECIALIST 18U  
MISS KEY BISKIT 108S  
LKPR CHALLENGER 208M  
PH CLEO 923J



**3** **PH VISTA 14G**  
Polled/Scurred MC787737 PH 14G 13-Mar-19

CJC SYMBOL B1067P  
**JDF VISTA 9E**  
JDF FAIRYTALE 117M

SCHRADERSMOOTHBLEND8219  
**PH BRIANNA 115Z**  
PH CLEO 3P

CJC SYMBOL Y771 P  
CJC MS COBALT X282  
SVY BEDROCK PLD 816H  
SFL 4148 MISS JAYLENE17J  
LT EASY BLEND 5125 PLD  
MISS LAYLA 109 ET  
PH TARGET POWER 33K  
PH DELLA RIO 823H

BW: 92 lbs		Adj 205: 689 lbs		WPDA: 3.32		365: 1196 lbs				
EPD'S	BW	WW	YW	M	TM	CARCASS	MARB	BF	REA in <sup>2</sup>	%LMY
	-0.2	47	86	16	40		3.3	2.38	13.4	67.19

- 14G is a long bodied red bull who carries his weight very well
- A light birth weight at 92 Lbs
- His mother 115Z is a never miss cow with two of our high selling bulls in the past 2 sales



**4** **PH ADVANCER 34G**  
Horned MC787745 PH 34G 18-Mar-19

KAYR SANCTION 102A  
**PH ADVANCER 141D**  
LVV CHROME 610X

PH WYOMING WIND 16U  
**PH KAYCEE 82A**  
PH LIBBY 70S

SVY LIBERTY 128Y  
KAYR MISS 102X  
MSF SKYLARK 617S  
LVV 619S  
PH WYOMING WIND 33P  
PH COWGIRL 37P  
HBSF LIBERTY 59N  
PH DELLA RIO 814H

BW: 96 lbs		Adj 205: 740 lbs		WPDA: 3.57		365: 1202 lbs				
EPD'S	BW	WW	YW	M	TM	CARCASS	MARB	BF	REA in <sup>2</sup>	%LMY
	1.5	53	92	19	46		3.5	2.86	13	66.39

- 34G is a stout bull with good numbers and a moderate birthweight
- Super disposition





- Another great son of Eaton's General Lee with loads of performance
- Ranking in the top 3% for REA and YL and the top 10% for MARB and CW
- Extremely free moving 111G will cover a lot of ground
- 111G will sire calves that really push the scale down

**2** **CPC GENERAL LEE 111G**

Horned MC793114 CPC 111G 7-Apr-19

BW: 104 lbs		Adj 205: 809 lbs		WPDA: 3.96		365: 1393 lbs				
EPD'S	BW	WW	YW	M	TM	CARCASS	MARB	BF	REA in <sup>2</sup>	%LMY
	3.7	54	105	17	45		3.5	3.33	15.8	68.15

LT LEDGER 0332 P  
**EATONS GENERAL LEE 20015P**  
 EATONS MISS GREYNA 00536

JSR TROPHY 88T  
**MISS RKR 11Y**  
 PRAIRIE COVE MISS 413P

LT BLUEGRASS 4017 P  
 LT BRENDA 6120 PLD  
 EATONS LEGEND 7020  
 EATONS GREYNA 8754  
 JSR TRUMP 7N  
 JSR KNOCKOUT 93M  
 HFCC PLD BOND 19L  
 PRAIRIE COVE MISS 264M



**5** **PH HOMBRE 9G**

Horned MC787754 PH 9G 10-Mar-19

WINN MANS LANZA 610S  
**PCC FRESH 527C**  
 MERIT CARMEN 7081T

PH ORIGINAL 70Y  
**PH OLIVIA 130B**  
 PH TANA BREEZE 43W

SPARROWS DURANGO 585P  
 WINN MAN MERIT 036K  
 SPARROWS ALLIANCE 513G  
 MERIT CARMEN 3138N  
 LT ORIGINAL 8310 P ET  
 PH KAYCEE 62T  
 JDF BLUE BOY 757  
 PH MS TOWKAY 55S

BW: 93 lbs		Adj 205: 743 lbs		WPDA: 3.49		365: 1227 lbs				
EPD'S	BW	WW	YW	M	TM	CARCASS	MARB	BF	REA in <sup>2</sup>	%LMY
	-0.7	51	99	21	47		3.8	3.33	14.7	67.32

- Moderate birth weight and smooth through the shoulders will put this bull in the calving ease group



**6** **PH HOMBRE 148G**

Polled MC787762 PH 148G 26-Apr-19

WINN MANS LANZA 610S  
**PCC FRESH 527C**  
 MERIT CARMEN 7081T

PH BANNER 107X  
**PH TATUM 6C**  
 RKR MISS 4L 8X

SPARROWS DURANGO 585P  
 WINN MAN MERIT 036K  
 SPARROWS ALLIANCE 513G  
 MERIT CARMEN 3138N  
 JSR TROPHY 88T  
 PH COWGIRL 39R  
 SHELCO MADE EASY 512R  
 RKR MISS 4L 106U

BW: 107 lbs		Adj 205: 847 lbs		WPDA: 4.12		365: 1381 lbs				
EPD'S	BW	WW	YW	M	TM	CARCASS	MARB	BF	REA in <sup>2</sup>	%LMY
	3.5	61	118	23	54		4.1	1.9	15	69

- Another red factor bull with a ton of performance
- Ranking in the top 2% for both WW and YW
- His dam 6C ranks in the top 3% of the breed for maternal traits





## 7 PH ADVANCE 134G

Polled MC787769 PH 134G 16-Apr-19

KAYR SANCTION 102A  
**PH ADVANCER 141D**  
 LVV CHROME 610X

PH ORIGINAL 70Y  
**PH OLIVIA 190C**  
 PH BRIANNA 35Y

SVY LIBERTY 128Y  
 KAYR MISS 102X  
 MSF SKYLARK 617S  
 LVV 619S  
 LT ORIGINAL 8310 P ET  
 PH KAYCEE 62T  
 LT EASY BLEND 5125 PLD  
 PH KAYCEE 255P

BW: 104 lbs		Adj 205: 750 lbs			WPDA: 3.52		365: 1209 lbs			
EPD'S	BW	WW	YW	M	TM	CARCASS	MARB	BF	REA in <sup>2</sup>	%LMY
	2.4	55	100	19	47	3.6	4.33	13.6	65.4	

- 134G is a very wide topped deep bodied bull with a beautiful coat of hair.
- The sons of 141D have really made a mark on this year's bull sale



## 8 PH WESTERN SKY 30G

Polled MC787691 PH 30G 17-Mar-19

PH WYOMING WIND 16U  
**PH WYOMING WIND 118B**  
 PH KAYCEE 61T

HBSF LIBERTY 59N  
**PH LIBBY 78W**  
 PH COWGIRL 38R

PH WYOMING WIND 33P  
 PH COWGIRL 37P  
 LKPR CHALLENGER 208M  
 PH CLEO 52N  
 MVX COUGARHILL HANK 720G  
 HBSF PRAIRIE WIND 2J  
 PH COWTOWN PLD 2M  
 ZRG MONTE'S CHRISTINA 8C

BW: 106 lbs		Adj 205: 725 lbs			WPDA: 3.45		365: 1125 lbs			
EPD'S	BW	WW	YW	M	TM	CARCASS	MARB	BF	REA in <sup>2</sup>	%LMY
	3.3	36	66	24	42	3.7	3.33	12.9	65.85	

- 30G is out of one of our best cows.... three sale bulls and 3 daughters in the herd and still producing
- From any angle he is pleasing to the eye
- Great disposition



## 9 PH GENERAL LEE 123G

Polled MC787690 PH 123G 12-Apr-19

LT LEDGER 0332 P  
**EATONS GENERAL LEE 20015P**  
 EATONS MISS GREYNA 00536

LKPR CHALLENGER 208M  
**PH KAYCEE 74W**  
 PH COWGIRL 39R

LT BLUEGRASS 4017 P  
 LT BRENDA 6120 PLD  
 EATONS LEGEND 7020  
 EATONS GREYNA 8754  
 LT WYOMING WIND 4020 PLD  
 GPA LUSTY LADY 69H  
 PH COWTOWN PLD 13M  
 PH CLEO 22L

BW: 106 lbs		Adj 205: 780 lbs			WPDA: 3.8		365: 1235 lbs			
EPD'S	BW	WW	YW	M	TM	CARCASS	MARB	BF	REA in <sup>2</sup>	%LMY
	2.1	53	98	22	48	3.8	2.86	12.5	66.02	

- A stylish bull with great carcass numbers Top 2% for REA and top 10% on Marbling
- Deep ribbed and wide down his top
- Full brother to Matt & Shawna Elines



## 10 PH GENERAL LEE 121G

Polled MC787698 PH 121G 11-Apr-19

LT LEDGER 0332 P  
**EATONS GENERAL LEE 20015P**  
 EATONS MISS GREYNA 00536

MSF SKYLARK 617S  
**LVV CHROME 607X**  
 LVV WIND 611P

LT BLUEGRASS 4017 P  
 LT BRENDA 6120 PLD  
 EATONS LEGEND 7020  
 EATONS GREYNA 8754  
 HFCC PLD CHROME 51L  
 MSF 118L  
 LT WYOMING WIND 4020 PLD  
 LVV MS BRONSON 625J

BW: 96 lbs		Adj 205: 756 lbs			WPDA: 3.65		365: 1188 lbs			
EPD'S	BW	WW	YW	M	TM	CARCASS	MARB	BF	REA in <sup>2</sup>	%LMY
	0.6	50	90	19	44	3.5	2.86	13.4	66.69	

- Smooth through the shoulders, small head and a lighter birth weight will make for easy calving
- Good carcass numbers





## 11 PH GENERAL LEE 110G

Polled MC787039 PH 110G 7-Apr-19

LT LEDGER 0332 P  
**EATONS GENERAL LEE 20015P**  
 EATONS MISS GRETN A 00536

LKPR CHALLENGER 208M  
**PH KAYCEE 63U**  
 PH CLEO 38L

LT BLUEGRASS 4017 P  
 LT BRENDA 6120 PLD  
 EATONS LEGEND 7020  
 EATONS GRETN A 8754  
 LT WYOMING WIND 4020 PLD  
 GPA LUSTY LADY 69H  
 SVC HEZA TARGETPOWER 25E  
 PH DAWNA RIO 415D

BW: 96 lbs		Adj 205: 678 lbs			WPDA: 3.28		365: 1208 lbs			
EPD'S	BW	WW	YW	M	TM	CARCASS	MARB	BF	REA in^2	%LMY
	0.5	46	92	19	42	4.5	2.86	13.1	66.45	

- 110G is a very smooth made bull with huge rib shape
- Ranks in the top 1% for marbling... 3% for REA and 5% in overall carcass yield
- Moderate birthweight
- From our best producing cow family 63U is Homozygous on Leptin, PMCH, IGF2 and CRH
- 6 great producing daughters in the herd and bulls to Bob Fraser and Highway 21 Feeders



## 12 PH GENERAL LEE 124G

Horned MC787704 PH 124G 12-Apr-19

LT LEDGER 0332 P  
**EATONS GENERAL LEE 20015P**  
 EATONS MISS GRETN A 00536

JSR TROPHY 88T  
**PH TATUM 15X**  
 PH KAYCEE 2P

LT BLUEGRASS 4017 P  
 LT BRENDA 6120 PLD  
 EATONS LEGEND 7020  
 EATONS GRETN A 8754  
 JSR TRUMP 7N  
 JSR KNOCKOUT 93M  
 LKPR CHALLENGER 208M  
 PH CLEO 41K

BW: 88 lbs		Adj 205: 770 lbs			WPDA: 3.72		365: 1260 lbs			
EPD'S	BW	WW	YW	M	TM	CARCASS	MARB	BF	REA in^2	%LMY
	-1.2	44	89	22	45	4.7	3.81	13.8	66.1	

- Low birth weight and big performance
- High ranking for marbling and REA
- Full brothers to Nester Ranching and Gordon Church



## 13 PH WESTERN SKY 43G

Horned MC787751 PH 43G 21-Mar-19

PH WYOMING WIND 16U  
**PH WYOMING WIND 118B**  
 PH KAYCEE 61T

PH BANNER 107X  
**PH TATUM 55B**  
 PH KAYCEE 82T

PH WYOMING WIND 33P  
 PH COWGIRL 37P  
 LKPR CHALLENGER 208M  
 PH CLEO 52N  
 JSR TROPHY 88T  
 PH COWGIRL 39R  
 LKPR CHALLENGER 208M  
 PH CLEO 53M

BW: 108 lbs		Adj 205: 727 lbs			WPDA: 3.44		365: 1199 lbs			
EPD'S	BW	WW	YW	M	TM	CARCASS	MARB	BF	REA in^2	%LMY
	4.5	44	84	22	44	3.9	3.33	14.5	67.12	

- 43G has always been an eye catcher
- Thick, Deep and wide across the top



## 14 PH HOMBRE 32G

Polled MC787864 PH 32G 18-Mar-19

WINN MANS LANZA 610S  
**PCC FRESH 527C**  
 MERIT CARMEN 7081T

EATONS GENERAL LEE 20015P  
**PH GENNA LEE 160D**  
 PH BRIANNA 35Y

SPARROWS DURANGO 585P  
 WINN MAN MERIT 036K  
 SPARROWS ALLIANCE 513G  
 MERIT CARMEN 3138N  
 LT LEDGER 0332 P  
 EATONS MISS GRETN A 00536  
 LT EASY BLEND 5125 PLD  
 PH KAYCEE 255P

BW: 98 lbs		Adj 205: 779 lbs			WPDA: 3.39		365: 1238 lbs			
EPD'S	BW	WW	YW	M	TM	CARCASS	MARB	BF	REA in^2	%LMY
	0.9	53	103	17	44	3.4	3	14	67.09	

- Moderate birth weight bull with a small head
- Square hipped and lots of thickness





15

**PH BROWNING 59G**

Polled MC787845 PH 59G 24-Mar-19

ZKCC GAME ON 266Z  
**PCC BROWNING 756E**  
 WR MISS MERYL 26T

PH BANNER 107X  
**PH TATUM 58D**  
 RKR MISS 4L 8X

TR PZC MR TURTON 0794 ET  
 MISS KEY TORE 163S  
 KEYS HANDYMAN 95L  
 WR MISS KEY MERYL J620  
 JSR TROPHY 88T  
 PH COWGIRL 39R  
 SHELCO MADE EASY 512R  
 RKR MISS 4L 106U

BW: 90 lbs		Adj 205: 795 lbs			WPDA: 3.49		365: 1267 lbs			
EPD'S	BW	WW	YW	M	TM	CARCASS	MARB	BF	REA in <sup>2</sup>	%LMY
	1.1	49	91	25	49		3.6	2.92	14.1	67.25

- 59G is full of post weaning performance
- Light birth weight but a big body should produce big results



16

**PH HOMBRE 46G**

Polled MC787736 PH 46G 21-Mar-19

WINN MANS LANZA 610S  
**PCC FRESH 527C**  
 MERIT CARMEN 7081T

JSR TROPHY 88T  
**PH TATUM 99Z**  
 PH COWGIRL 5T

SPARROWS DURANGO 585P  
 WINN MAN MERIT 036K  
 SPARROWS ALLIANCE 513G  
 MERIT CARMEN 3138N  
 JSR TRUMP 7N  
 JSR KNOCKOUT 93M  
 PH COWTOWN PLD 13M  
 PH CLEO 63M

BW: 102 lbs		Adj 205: 697 lbs			WPDA: 3.37		365: 1231 lbs			
EPD'S	BW	WW	YW	M	TM	CARCASS	MARB	BF	REA in <sup>2</sup>	%LMY
	2	46	98	24	47		3.3	3.39	14.2	66.82

- 46G is moderate framed with a deep body
- Add pounds and more outcome to your feeders



17

**PH WESTERN SKY 67G**

Polled MC787763 PH 67G 26-Mar-19

PH WYOMING WIND 16U  
**PH WYOMING WIND 118B**  
 PH KAYCEE 61T

KAYR SANCTION 102A  
**PH MISS ADVANCE 94C**  
 PH BRIANNA 73Z

PH WYOMING WIND 33P  
 PH COWGIRL 37P  
 LKPR CHALLENGER 208M  
 PH CLEO 52N  
 SVY LIBERTY 128Y  
 KAYR MISS 102X  
 SCHRADERSMOOTHBLEND8219  
 PH KAYCEE 63T

BW: 109 lbs		Adj 205: 759 lbs			WPDA: 3.5		365: 1177 lbs			
EPD'S	BW	WW	YW	M	TM	CARCASS	MARB	BF	REA in <sup>2</sup>	%LMY
	4.2	50	87	19	44		3.1	3.33	13.3	66.13

- Huge hind quarter typical of the 118B sons
- Solid made with plenty of shape



18

**PH BROWNING 84G**

Polled MC787855 PH 84G 30-Mar-19

ZKCC GAME ON 266Z  
**PCC BROWNING 756E**  
 WR MISS MERYL 26T

EATONS GENERAL LEE 20015P  
**PH GENNA LEE 117D**  
 PH MONA LISA 81Y

TR PZC MR TURTON 0794 ET  
 MISS KEY TORE 163S  
 KEYS HANDYMAN 95L  
 WR MISS KEY MERYL J620  
 LT LEDGER 0332 P  
 EATONS MISS GREYNA 0053G  
 CEDARLEA MANKOTA 26W  
 PH KAYCEE 63U

BW: 98 lbs		Adj 205: 726 lbs			WPDA: 3.16		365: 1220 lbs			
EPD'S	BW	WW	YW	M	TM	CARCASS	MARB	BF	REA in <sup>2</sup>	%LMY
	1.8	46	90	21	44		4.7	3.4	13.5	66.23

- Moderate birth weight... 84G has a small head and smooth shoulders
- Easy doing bull with natural width
- Top 5% REA
- Goes back to the powerful 63U cow family





## 19 PH GENERAL LEE 95G

Polled MC786999 PH 95G 2-Apr-19

LT LEDGER 0332 P  
**EATONS GENERAL LEE 20015P**  
 EATONS MISS GREYNA 00536

LT BLUEGRASS 4017 P  
 LT BRENDA 6120 PLD  
 EATONS LEGEND 7020  
 EATONS GREYNA 8754  
 LT WYOMING WIND 4020 PLD  
 GPA LUSTY LADY 69H  
 SVC HEZA TARGETPOWER 25E  
 P&H DELLA RIO 6Z

LKPR CHALLENGER 208M  
**PH KAYCEE 66T**  
 PH CLEO 945J

BW: 105 lbs		Adj 205: 638 lbs		WPDA: 3.08		365: 1056 lbs				
EPD'S	BW	WW	YW	M	TM	CARCASS	MARB	BF	REA in^2	%LMY
	2.1	42	80	19	40	3.1	1.9	12.5	67	

- This is the 6th son to sell out of the 66T cow.
- His yearling to current gain is exceptional
- Top 5% for marbling



## 20 PH ADVANCER 63G

Horned MC787700 PH 63G 25-Mar-19

KAYR SANCTION 102A  
**PH ADVANCER 141D**  
 LVV CHROME 610X

SVY LIBERTY 128Y  
 KAYR MISS 102X  
 MSF SKYLARK 617S  
 LVV 619S  
 UNLIMITED YL06 PLD  
 LT DUCHESS OF MAC 7076 P  
 VMN HABANERO PLD 137L  
 PH DELLA RIO 505E

LT ORIGINAL 8310 P ET  
**PH OLIVIA 109X**  
 PH ABBEY 34T

BW: 105 lbs		Adj 205: 765 lbs		WPDA: 3.71		365: 1165 lbs				
EPD'S	BW	WW	YW	M	TM	CARCASS	MARB	BF	REA in^2	%LMY
	2.8	55	94	22	49	2.8	3	13.4	66.6	

- A bit more frame but still maintains depth of body and thickness
- Top 10% for WW



## 21 PH HOMBRE 29G

Horned MC787703 PH29G 17-Mar-19

WINN MANS LANZA 610S  
**PCC FRESH 527C**  
 MERIT CARMEN 7081T

SPARROWS DURANGO 585P  
 WINN MAN MERIT 036K  
 SPARROWS ALLIANCE 513G  
 MERIT CARMEN 3138N  
 LT WYOMING WIND 4020 PLD  
 GPA LUSTY LADY 69H  
 PH COWTOWN PLD 2M  
 ZRG MONTE'S CHRISTINA 8C

LKPR CHALLENGER 208M  
**PH KAYCEE 29X**  
 PH COWGIRL 38R

BW: 106 lbs		Adj 205: 748 lbs		WPDA: 3.6		365: 1255 lbs				
EPD'S	BW	WW	YW	M	TM	CARCASS	MARB	BF	REA in^2	%LMY
	1.9	48	97	24	48	3.7	2.38	14.9	68.44	

- Another good son of General Lee
- Half brothers to Lomond Grazing, Newell Grazing and Rey Creek



## 22 PH NO WORRIES 20G

Polled/Scurred MC793745 PH 20G 14-Mar-19

PLEASANT DAWN CHISUM 216A  
**SKW RELOAD 152E**  
 SKW SWEETDREAMS 71C

EATONS BIG BUD 10402 P  
 PLESANT DAWN MAGGIE 316X  
 LT LEDGER 0332 P  
 SKW SWEETDREAMS 95A  
 LM MR CIGAR 2110Z  
 PH BRIANNA 84Y  
 LKPR CHALLENGER 208M  
 PH CLEO 53M

PH CIGAR 194B  
**PH MADAM CIGAR 144E**  
 PH KAYCEE 78U

BW: 82 lbs		Adj 205: 699 lbs		WPDA: 3		365: 1144 lbs				
EPD'S	BW	WW	YW	M	TM	CARCASS	MARB	BF	REA in^2	%LMY
	-1.7	49	95	19	44	3.9	3.54	11.8	64.69	

- Low birth weight pedigree from a first calf heifer
- A well balance bull with good length and depth of body





23

**PH ADVANCER 80G**

Polled MC787753 PH 80G 29-Mar-19

KAYR SANCTION 102A  
**PH ADVANCER 141D**  
 LVV CHROME 610X

KEYS WISHBONE 40Y  
**PH WILLOW 73B**  
 PH KAYCEE 63U

SVY LIBERTY 128Y  
 KAYR MISS 102X  
 MSF SKYLARK 617S  
 LVV 619S  
 KEYS SPECIALIST 18U  
 MISS KEY BISKIT 108S  
 LKPR CHALLENGER 208M  
 PH CLEO 38L

BW: 95 lbs		Adj 205: 587 lbs			WPDA: 2.86		365: 1099 lbs			
EPD'S	BW	WW	YW	M	TM	CARCASS	MARB	BF	REA in <sup>2</sup>	%LMY
	0.8	47	91	18	41		3.5	2.38	12.6	66.51

24

**PH ADVANCER 64G**

Polled MC793747 PH 64G 25-Mar-19

KAYR SANCTION 102A  
**PH ADVANCER 141D**  
 LVV CHROME 610X

HTA SKYLITER PLD 23Z  
**RKR MISS 4L 3W**  
 RKR MISS 4L 14J

SVY LIBERTY 128Y  
 KAYR MISS 102X  
 MSF SKYLARK 617S  
 LVV 619S  
 KJP SKY FIRE 51T  
 HTA PANSY 211P  
 LT WYOMING WIND 4020 PLD  
 GDR PERFECT IMPACT 1E

BW: 104 lbs		Adj 205: lbs			WPDA:		365: lbs			
EPD'S	BW	WW	YW	M	TM	CARCASS	MARB	BF	REA in <sup>2</sup>	%LMY
	1.7	44	74	17	39		4.6	2.46	11.5	65.61

25

**PH BROWNING 57G**

Polled MC793746 PH 57G 23-Mar-19

ZKCC GAME ON 266Z  
**PCC BROWNING 756E**  
 WR MISS MERYL 26T

JSR TROPHY 88T  
**PH TATUM 23D**  
 PH LIBBY 3R

TR PZC MR TURTON 0794 ET  
 MISS KEY TORE 163S  
 KEYS HANDYMAN 95L  
 WR MISS KEY MERYL J620  
 JSR TRUMP 7N  
 JSR KNOCKOUT 93M  
 HBSF LIBERTY 59N  
 PH CLEO 41K

BW: 103 lbs		Adj 205: 683 lbs			WPDA: 3.13		365: 1195 lbs			
EPD'S	BW	WW	YW	M	TM	CARCASS	MARB	BF	REA in <sup>2</sup>	%LMY
	3	39	83	22	42		4	2.8	12.2	65.83

26

**PH HOMBRE 56G**

Horned MC787854 PH 56G 23-Mar-19

WINN MANS LANZA 610S  
**PCC FRESH 527C**  
 MERIT CARMEN 7081T

KAYR NOTORIOUS 111B  
**PH NORA KAY 96D**  
 PH BRIANNA 38Z

SPARROWS DURANGO 585P  
 WINN MAN MERIT 036K  
 SPARROWS ALLIANCE 513G  
 MERIT CARMEN 3138N  
 ROLLING D CLASSIC 878U  
 KAYR MISS 111X  
 SCHRADERSMOOTHBLEND8219  
 PH COWGIRL 50R

BW: 95 lbs		Adj 205: 745 lbs			WPDA: 3.24		365: 1185 lbs			
EPD'S	BW	WW	YW	M	TM	CARCASS	MARB	BF	REA in <sup>2</sup>	%LMY
	0.4	53	98	21	48		3.4	2.38	13	66.9

27

**PH NO WORRIES 41G**

Horned MC793798 PH 41G 20-Mar-19

PLEASANT DAWN CHISUM 216A  
**SKW RELOAD 152E**  
 SKW SWEETDREAMS 71C

KAYR SANCTION 102A  
**PH MISS ADVANCE 65E**  
 PH MISS DURANGO 7Z

EATONS BIG BUD 10402 P  
 PLESANT DAWN MAGGIE 316X  
 LT LEDGER 0332 P  
 SKW SWEETDREAMS 95A  
 SVY LIBERTY 128Y  
 KAYR MISS 102X  
 SDC CARHARTT 948W  
 LVV CHROME 11U

BW: 97 lbs		Adj 205: 700 lbs			WPDA: 3.01		365: 1110 lbs			
EPD'S	BW	WW	YW	M	TM	CARCASS	MARB	BF	REA in <sup>2</sup>	%LMY
	1.2	50	96	25	50		3.2	2.8	11.9	65.57



28

**PH NOTORIOUS 133G**

Polled MC787699 PH 133G 16-Apr-19

ROLLING D CLASSIC 878U  
**KAYR NOTORIOUS 111B**  
 KAYR MISS 111X

JSR TROPHY 88T  
**MISS RKR 80Y**  
 RKR MISS 4L 40S

HTA PURSUIT 646S  
 ROLLING D PRETTY BABE 27P  
 M6 GRID MAKER 104 PET  
 KAY-R MISS FUSION 529J  
 JSR TRUMP 7N  
 JSR KNOCKOUT 93M  
 RKR 4L CHINOOK 10N  
 RKR MISS 4L 14M

BW: 95 lbs		Adj 205: 698 lbs			WPDA: 3.44		365: 1138 lbs			
EPD'S	BW	WW	YW	M	TM	CARCASS	MARB	BF	REA in <sup>2</sup>	%LMY
	-0.8	40	76	23	43		3.9	2.92	11.5	65.14



29

PH WESTERN SKY 15G

Polled MC787749 PH 15G 13-Mar-19

PH WYOMING WIND 16U  
PH WYOMING WIND 118B  
PH KAYCEE 61T

KEYS WISHBONE 40Y  
PH WILLOW 134A  
PH COWGIRL 64R

PH WYOMING WIND 33P  
PH COWGIRL 37P  
LKPR CHALLENGER 208M  
PH CLEO 52N  
KEYS SPECIALIST 18U  
MISS KEY BISKIT 108S  
PH COWTOWN PLD 13M  
PH CLEO 31L

BW: 98 lbs		Adj 205: 707 lbs		WPDA: 3.41		365: 1129 lbs				
EPD'S	BW	WW	YW	M	TM	CARCASS	MARB	BF	REA in^2	%LMY
	2.2	45	81	19	42	3.5	2.38	14	67.67	

30

PH BROWNING 104G

Polled MC787841 PH 104G 5-Apr-19

ZKCC GAME ON 266Z  
PCC BROWNING 756E  
WR MISS MERYL 26T

KAYR SANCTION 102A  
PH MISS ADVANCE 41D  
PH BRIANNA 87Y

TR PZC MR TURTON 0794 ET  
MISS KEY TORE 163S  
KEYS HANDYMAN 95L  
WR MISS KEY MERYL J620  
SVY LIBERTY 128Y  
KAYR MISS 102X  
SCHRADERSMOOTHBLEND8219  
PH ABBEY 34T

BW: 104 lbs		Adj 205: 789 lbs		WPDA: 3.67		365: 1256 lbs				
EPD'S	BW	WW	YW	M	TM	CARCASS	MARB	BF	REA in^2	%LMY
	2.2	52	96	24	50	3.4	3.33	13.3	66.13	



Lot 31

31

PH HOMBRE 157G

Horned MC787766 PH 157G 22-May-19

WINN MANS LANZA 610S  
PCC FRESH 527C  
MERIT CARMEN 7081T

EATONS GENERAL LEE 20015P  
PH GENNA LEE 157C  
PH KAYCEE 32S

SPARROWS DURANGO 585P  
WINN MAN MERIT 036K  
SPARROWS ALLIANCE 513G  
MERIT CARMEN 3138N  
LT LEDGER 0332 P  
EATONS MISS GREYNA 00536  
PH WYOMING WIND PLD 50P  
PH WHITE PEARL 57M

BW: 94 lbs		Adj 205: 807 lbs		WPDA: 4.01		365: 1297 lbs				
EPD'S	BW	WW	YW	M	TM	CARCASS	MARB	BF	REA in^2	%LMY
	1.7	55	108	19	47	3	2.38	13.9	67.63	

32

PH HOMBRE 158G

Polled MC787055 PH 158G 22-May-19

WINN MANS LANZA 610S  
PCC FRESH 527C  
MERIT CARMEN 7081T

LKPR CHALLENGER 208M  
PH KAYCEE 107U  
PH DELLA RIO 510E

SPARROWS DURANGO 585P  
WINN MAN MERIT 036K  
SPARROWS ALLIANCE 513G  
MERIT CARMEN 3138N  
LT WYOMING WIND 4020 PLD  
GPA LUSTY LADY 69H  
BAR 19 JACKSON 326C  
P&H DELLA RIO 6Z

BW: 104 lbs		Adj 205: 795 lbs		WPDA: 4.01		365: 1272 lbs				
EPD'S	BW	WW	YW	M	TM	CARCASS	MARB	BF	REA in^2	%LMY
	2	60	113	21	51	3.7	2.46	12	65.97	

33

PH NO WORRIES 91G

Horned MC793799 PH 91G 1-Apr-19

PLEASANT DAWN CHISUM 216A  
SKW RELOAD 152E  
SKW SWEETDREAMS 71C

KEYS WISHBONE 40Y  
PH WISHBONE 22E  
PH KAYCEE 82A

EATONS BIG BUD 10402 P  
PLESANT DAWN MAGGIE 316X  
LT LEDGER 0332 P  
SKW SWEETDREAMS 95A  
KEYS SPECIALIST 18U  
MISS KEY BISKIT 108S  
PH WYOMING WIND 16U  
PH LIBBY 70S

BW: 92 lbs		Adj 205: 695 lbs		WPDA: 3.02		365: 1127 lbs				
EPD'S	BW	WW	YW	M	TM	CARCASS	MARB	BF	REA in^2	%LMY
	-0.1	51	98	18	44	4.3	2.86	13.2	66.57	

34

PH ADVANCER 98G

Horned MC787731 PH 98G 3-Apr-19

KAYR SANCTION 102A  
PH ADVANCER 141D  
LVV CHROME 610X

PH MONTANA SKY 59W  
RKR MISS 36Z  
RKR MISS 4L 92T

SVY LIBERTY 128Y  
KAYR MISS 102X  
MSF SKYLARK 617S  
LVV 619S  
JDF BLUE BOY 757  
PH KAYCEE 17R  
RKR 4L GOLDEN KNIGHT 80M  
RKR MISS 4L 41M

BW: 105 lbs		Adj 205: 716 lbs		WPDA: 3.49		365: 1106 lbs				
EPD'S	BW	WW	YW	M	TM	CARCASS	MARB	BF	REA in^2	%LMY
	3	52	85	17	43	3.6	2.7	13.2	66.72	

• Red Factor



PH Advancer 141D - Sire of Lot 34 and 7 other Sons Sell



**35****PH BROWNING 28G**

Polled MC787837 PH 28G 16-Mar-19

ZKCC GAME ON 266Z  
**PCC BROWNING 756E**  
 WR MISS MERYL 26T

PH BANNER 107X  
**PH TATUM 15D**  
 RKR MISS 4L 92T

TR PZC MR TURTON 0794 ET  
 MISS KEY TORE 163S  
 KEYS HANDYMAN 95L  
 WR MISS KEY MERYL J620  
 JSR TROPHY 88T  
 PH COWGIRL 39R  
 RKR 4L GOLDEN KNIGHT 80M  
 RKR MISS 4L 41M

BW: 98 lbs		Adj 205: 754 lbs		WPDA: 3.27		365: 1136 lbs				
EPD'S	BW	WW	YW	M	TM	CARCASS	MARB	BF	REA in <sup>2</sup>	%LMY
	1.5	42	75	24	46		3.5	3.33	12.6	65.54



Lot 37

**36****PH TOUCHDOWN 143G**

Polled MC787061 PH 143G 21-Apr-19

GERRARD PASTOR 35Z  
**CML TOUCHDOWN 414B**  
 CML PLD WILMA 3S

JDJ SMOKESTER J1377 P ET  
**PH SMOKIN LACE 12W**  
 PH KAYCEE 50S

GERRARD PREACHER 31U  
 GERRARD ROXANNE 18P  
 MERIT VINTAGE 4065P  
 TARGET PLD GINNY 40P  
 LHD CIGAR E46  
 JD MS COMMANDER B309  
 LT WYOMING WIND 4020 PLD  
 PH CLEO 59L

BW: 100 lbs		Adj 205: 692 lbs		WPDA: 3.4		365: 1097 lbs				
EPD'S	BW	WW	YW	M	TM	CARCASS	MARB	BF	REA in <sup>2</sup>	%LMY
	1.4	34	64	27	44		3.2	2.38	11.5	65.68



Lot 36

**37****PH CIGAR 142G**

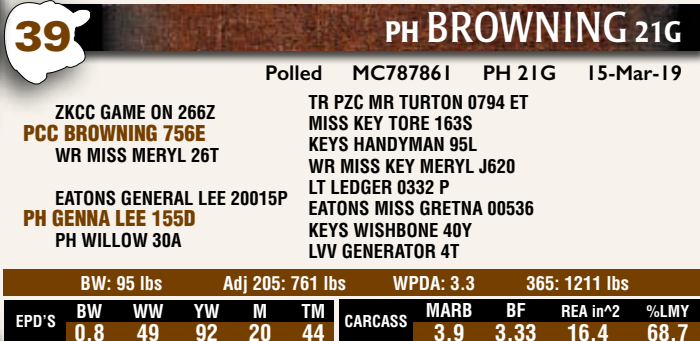
Polled MC787696 PH 142G 20-Apr-19

LM MR CIGAR 2110Z  
**PH CIGAR 194B**  
 PH BRIANNA 84Y

JSR TROPHY 88T  
**RKR 84X**  
 RKR MISS 4L 64G

LM MR CIGAR 541R  
 LM MS HONEY 2345M  
 SCHRADERSSMOOTHBLEND8219  
 PH CLEO 41K  
 JSR TRUMP 7N  
 JSR KNOCKOUT 93M  
 PCS SIR CONON 62C  
 CFL MISS AGAVE 51A

BW: 101 lbs		Adj 205: 667 lbs		WPDA: 3.24		365: 1188 lbs				
EPD'S	BW	WW	YW	M	TM	CARCASS	MARB	BF	REA in <sup>2</sup>	%LMY
	1.5	42	86	21	42		3.8	1.9	12.7	67.09



Lot 37

**38****PH BROWNING 156G**

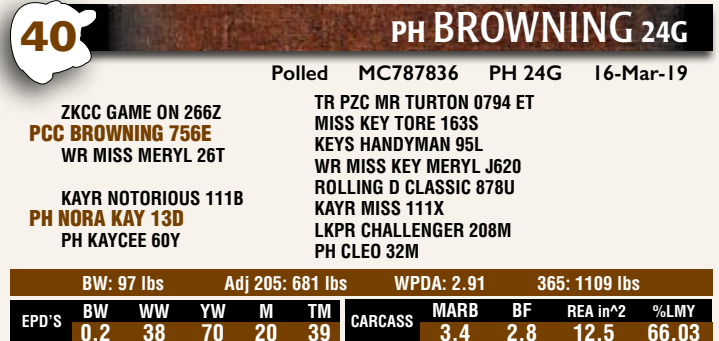
Polled MC787847 PH 156G 15-May-19

ZKCC GAME ON 266Z  
**PCC BROWNING 756E**  
 WR MISS MERYL 26T

PH BANNER 107X  
**PH TATUM 67D**  
 PH KAYCEE 28X

TR PZC MR TURTON 0794 ET  
 MISS KEY TORE 163S  
 KEYS HANDYMAN 95L  
 WR MISS KEY MERYL J620  
 JSR TROPHY 88T  
 PH COWGIRL 39R  
 LKPR CHALLENGER 208M  
 PH COWGIRL 50R

BW: 89 lbs		Adj 205: 794 lbs		WPDA: 3.8		365: 1172 lbs				
EPD'S	BW	WW	YW	M	TM	CARCASS	MARB	BF	REA in <sup>2</sup>	%LMY
	0.2	44	79	27	49		3.4	3.33	11.6	64.8



Lot 38

**39****PH BROWNING 21G**

Polled MC787861 PH 21G 15-Mar-19

ZKCC GAME ON 266Z  
**PCC BROWNING 756E**  
 WR MISS MERYL 26T

EATONS GENERAL LEE 20015P  
**PH GENNA LEE 155D**  
 PH WILLOW 30A

TR PZC MR TURTON 0794 ET  
 MISS KEY TORE 163S  
 KEYS HANDYMAN 95L  
 WR MISS KEY MERYL J620  
 LT LEDGER 0332 P  
 EATONS MISS GREYNA 00536  
 KEYS WISHBONE 40Y  
 LVV GENERATOR 4T

BW: 95 lbs		Adj 205: 761 lbs		WPDA: 3.3		365: 1211 lbs				
EPD'S	BW	WW	YW	M	TM	CARCASS	MARB	BF	REA in <sup>2</sup>	%LMY
	0.8	49	92	20	44		3.9	3.33	16.4	68.7

**40****PH BROWNING 24G**

Polled MC787836 PH 24G 16-Mar-19

ZKCC GAME ON 266Z  
**PCC BROWNING 756E**  
 WR MISS MERYL 26T

KAYR NOTORIOUS 111B  
**PH NORA KAY 13D**  
 PH KAYCEE 60Y

TR PZC MR TURTON 0794 ET  
 MISS KEY TORE 163S  
 KEYS HANDYMAN 95L  
 WR MISS KEY MERYL J620  
 ROLLING D CLASSIC 878U  
 KAYR MISS 111X  
 LKPR CHALLENGER 208M  
 PH CLEO 32M

BW: 97 lbs		Adj 205: 681 lbs		WPDA: 2.91		365: 1109 lbs				
EPD'S	BW	WW	YW	M	TM	CARCASS	MARB	BF	REA in <sup>2</sup>	%LMY
	0.2	38	70	20	39		3.4	2.8	12.5	66.03



## 41 PH NO WORRIES 132G

Horned MC793783 PH 132G 15-Apr-19

PLEASANT DAWN CHISUM 216A  
**SKW RELOAD 152E**  
 SKW SWEETDREAMS 71C  
 PH CIGAR 194B  
**PH MADAM CIGAR 159E**  
 PH WILLOW 62B

EATONS BIG BUD 10402 P  
 PLESANT DAWN MAGGIE 316X  
 LT LEDGER 0332 P  
 SKW SWEETDREAMS 95A  
 LM MR CIGAR 2110Z  
 PH BRIANNA 84Y  
 KEYS WISHBONE 40Y  
 PH KAYCEE 62T

BW: 90 lbs		Adj 205: 640 lbs		WPDA: 2.77		365: 1152 lbs				
EPD'S	BW	WW	YW	M	TM	CARCASS	MARB	BF	REA in^2	%LMY
	0.3	51	104	19	44		4.3	2.46	12.4	66.32

## 42 PH CIGAR 151G

Polled MC787761 PH 151G 28-Apr-19

LM MR CIGAR 2110Z  
**PH CIGAR 194B**  
 PH BRIANNA 84Y

EATONS GENERAL LEE 20015P  
**PH GENNA LEE 71C**  
 PH ABBEY 34T

LM MR CIGAR 541R  
 LM MS HONEY 2345M  
 SCHRADERSMOOTHBLEND8219  
 PH CLEO 41K  
 LT LEDGER 0332 P  
 EATONS MISS GREYNA 00536  
 VMN HABANERO PLD 137L  
 PH DELLA RIO 505E

BW: 91 lbs		Adj 205: 640 lbs		WPDA: 3.64		365: 1198 lbs				
EPD'S	BW	WW	YW	M	TM	CARCASS	MARB	BF	REA in^2	%LMY
	-0.5	47	87	18	42		3.6	2.38	11.5	65.63

## 43 PH CIGAR 129G

Polled Not Registered PH 129G 14-Apr-19

LM MR CIGAR 2110Z  
**PH CIGAR 194B**  
 PH BRIANNA 84Y

HBSF LIBERTY 59N  
**PH LIBBY 43U** (Not Registered)  
 PH CLEO 29P

LM MR CIGAR 541R  
 LM MS HONEY 2345M  
 SCHRADERS SMOOTHBLEND 8219  
 PH CLEO 41K  
 MVX COUGARHILL HANK 720G  
 HBSF PRAIRIE WIND 2J  
 PH TARGET POWER 33K  
 PH MISS DOOLEY 36K

BW: 100 lbs		Adj 205: 695 lbs		YW: 1140 lbs						
EPD'S	BW	WW	YW	M	TM	CARCASS	MARB	BF	REA in^2	%LMY
	NA	NA	NA	NA	NA		3	2.38	12.3	66.31

## 44 PH CIGAR 128G

Polled MC786985 PH 128G 13-Apr-19

LM MR CIGAR 2110Z  
**PH CIGAR 194B**  
 PH BRIANNA 84Y

PH COWTOWN PLD 13M  
**PH COWGIRL 20S**  
 PH CALLA 741G

LM MR CIGAR 541R  
 LM MS HONEY 2345M  
 SCHRADERSMOOTHBLEND8219  
 PH CLEO 41K  
 SNAKE VALLEY TRIBUE 5J  
 PH CLEO 918J  
 GTB ROYAL CAJ 10E  
 PH DAWNA RIO 418D

BW: 103 lbs		Adj 205: 732 lbs		WPDA: 3.56		365: 1177 lbs				
EPD'S	BW	WW	YW	M	TM	CARCASS	MARB	BF	REA in^2	%LMY
	1.5	45	83	25	48		3.9	2.86	12.1	65.67

## 45 PH CIGAR 150G

Polled MC786989 PH 150G 27-Apr-19

LM MR CIGAR 2110Z  
**PH CIGAR 194B**  
 PH BRIANNA 84Y

PH WYOMING WIND PLD 50P  
**PH KAYCEE 32S**  
 PH WHITE PEARL 57M

LM MR CIGAR 541R  
 LM MS HONEY 2345M  
 SCHRADERSMOOTHBLEND8219  
 PH CLEO 41K  
 LT WYOMING WIND 4020 PLD  
 PH CLEO 817H  
 SNAKE VALLEY TRIBUE 5J  
 PH CLEO 858H

BW: 90 lbs		Adj 205: 707 lbs		WPDA: 3.48		365: 1166 lbs				
EPD'S	BW	WW	YW	M	TM	CARCASS	MARB	BF	REA in^2	%LMY
	-0.9	43	79	19	40		3.6	2.86	13.5	66.78

## 46 PH PLAYBOOK 141G

Polled MC787735 PH 141G 19-Apr-19

GERRARD PASTOR 35Z  
**CML TOUCHDOWN 414B**  
 CML PLD WILMA 3S

JSR TROPHY 88T  
**PH TATUM 78Z**  
 PH KAYCEE 60U

GERRARD PREACHER 31U  
 GERRARD ROXANNE 18P  
 MERIT VINTAGE 4065P  
 TARGET PLD GINNY 40P  
 JSR TRUMP 7N  
 JSR KNOCKOUT 93M  
 PH WYOMING WIND 33P  
 PH CLEO 9N

BW: 102 lbs		Adj 205: 670 lbs		WPDA: 3.31		365: 1160 lbs				
EPD'S	BW	WW	YW	M	TM	CARCASS	MARB	BF	REA in^2	%LMY
	1.9	36	79	23	41		3.3	3.33	12.4	65.42



EATONS GENERAL LEE 20015P - Sire of Lots 2, 9-12 & 19



Lot 46



47

PH HOMBRE 86G

Polled MC787734 PH 86G 31-Mar-19

WINN MANS LANZA 610S  
PCC FRESH 527C  
MERIT CARMEN 7081T

JSR TROPHY 88T  
PH TATUM 48Z  
PH KAYCEE 107U

SPARROWS DURANGO 585P  
WINN MAN MERIT 036K  
SPARROWS ALLIANCE 513G  
MERIT CARMEN 3138N  
JSR TRUMP 7N  
JSR KNOCKOUT 93M  
LKPR CHALLENGER 208M  
PH DELLA RIO 510E

BW: 110 lbs		Adj 205: 752 lbs		WPDA: 3.65		365: 1161 lbs				
EPD'S	BW	WW	YW	M	TM	CARCASS	MARB	BF	REA in^2	%LMY
	2.4	52	100	21	47		3.7	3	13	66.28

48

PH CIGAR 120G

Polled MC786993 PH 120G 9-Apr-19

LM MR CIGAR 2110Z  
PH CIGAR 194B  
PH BRIANNA 84Y

LVV FOCUS 1N  
LVV FOCUS 613T  
LVV PEUGEOT 618N

LM MR CIGAR 541R  
LM MS HONEY 2345M  
SCHRADERSMOOTHBLEND8219  
PH CLEO 41K  
MISTY CREEK FOCUS 5F  
HOPE ANNIES GIRL 103L  
DBAR MAJESTIC 920J  
LVV ICETTE 912D

BW: 102 lbs		Adj 205: 688 lbs		WPDA: 3.34		365: 1120 lbs				
EPD'S	BW	WW	YW	M	TM	CARCASS	MARB	BF	REA in^2	%LMY
	1.9	46	81	16	39		2.9	2.46	12.1	66.07

49

PH HOMBRE 135G

Polled MC787858 PH 135G 16-Apr-19

WINN MANS LANZA 610S  
PCC FRESH 527C  
MERIT CARMEN 7081T

EATONS GENERAL LEE 20015P  
PH GENNA LEE 128D  
PH OLIVIA 77Y

SPARROWS DURANGO 585P  
WINN MAN MERIT 036K  
SPARROWS ALLIANCE 513G  
MERIT CARMEN 3138N  
LT LEDGER 0332 P  
EATONS MISS GREYNA 00536  
LT ORIGINAL 8310 P ET  
PH KAYCEE 100U

BW: 76 lbs		Adj 205: 673 lbs		WPDA: 3.13		365: 1189 lbs				
EPD'S	BW	WW	YW	M	TM	CARCASS	MARB	BF	REA in^2	%LMY
	-3	49	98	22	47		3.7	3.86	13.3	65.64

50

PH CIGAR 130G

Polled MC787755 PH 130G 16-Apr-19

LM MR CIGAR 2110Z  
PH CIGAR 194B  
PH BRIANNA 84Y

PH BANNER 52Z  
PH TATUM 160B  
PH MONA LISA 81Y

LM MR CIGAR 541R  
LM MS HONEY 2345M  
SCHRADERSMOOTHBLEND8219  
PH CLEO 41K  
JSR TROPHY 88T  
PH LIBBY 5R  
CEDARLEA MANKOTA 26W  
PH KAYCEE 63U

BW: 98 lbs		Adj 205: 688 lbs		WPDA: 3.31		365: 1106 lbs				
EPD'S	BW	WW	YW	M	TM	CARCASS	MARB	BF	REA in^2	%LMY
	0.9	39	73	20	39		4.4	2.86	12.1	65.65

51

PH ADVANCER 76G

Polled MC787743 PH 76G 28-Mar-19

KAYR SANCTION 102A  
PH ADVANCER 141D  
LVV CHROME 610X

KEYS WISHBONE 40Y  
PH WILLOW 60A  
PH COWGIRL 39R

SVY LIBERTY 128Y  
KAYR MISS 102X  
MSF SKYLARK 617S  
LVV 619S  
KEYS SPECIALIST 18U  
MISS KEY BISKIT 108S  
PH COWTOWN PLD 13M  
PH CLEO 22L

BW: 102 lbs		Adj 205: 643 lbs		WPDA: 3.13		365: 1038 lbs				
EPD'S	BW	WW	YW	M	TM	CARCASS	MARB	BF	REA in^2	%LMY
	1.7	46	82	23	46		3.8	2.6	12.3	66.08

52

PH CIGAR 147G

Horned MC787036 PH 147G 24-Apr-19

LM MR CIGAR 2110Z  
PH CIGAR 194B  
PH BRIANNA 84Y

PH COWTOWN 66R  
PH LIBBY 23U  
PH COWGIRL 39R

LM MR CIGAR 541R  
LM MS HONEY 2345M  
SCHRADERSMOOTHBLEND8219  
PH CLEO 41K  
PH COWTOWN PLD 13M  
PH DELLA RIO 505E  
PH COWTOWN PLD 13M  
PH CLEO 22L

BW: 97 lbs		Adj 205: 698 lbs		WPDA: 3.42		365: 1085 lbs				
EPD'S	BW	WW	YW	M	TM	CARCASS	MARB	BF	REA in^2	%LMY
	0.7	41	72	22	43		3.3	2.38	12.2	66.26



Good help is hard to find.



Even snickers must help on picture day!



Delivering bulls with Auntie Peach is exhausting





Home is where the herd is



If you feel like quitting... think about why you started



Free range calves



There is better ways to make a living but no better way to live!



Life is just better on the farm

**“I DO NOT BELIEVE THERE WAS EVER A LIFE MORE ATTRACTIVE THAN LIFE ON A CATTLE FARM”**

Theodore Roosevelt

And into the yard I go to lose my mind and find my soul.



YaHa Tinda Camping



Lots of rain makes for great mid summer grazing.

Silaging at Circle G



Angus cows grazing at Weisgerber pasture



# CIRCLE G SIMMENTALS & ANGUS



Welcome to the 2021 edition of our bull sale. First and foremost, we extend a huge thank you to all our buyers and bidders over the past year. Whether it be our many valued, long term customers or the first time buyers, the support shown Corrine and myself is very gratifying. We truly appreciate the loyalty and the trust shown in our breeding

programs and look forward to working with you in the future.

This motivates me to make a good product even better! I've continued to make substantial investments to acquire new genetics to achieve that goal.

The past year has been challenging like no other in many ways. However, those of us in agriculture are accustomed to dealing with adversity and we will persevere!

My Simmental and Angus cowherd numbers have grown to over 350 head. The cowherd has been built by selecting for moderate framed, easy fleshing, correct uddered females that are genetically stacked with moderate birth weight, calving ease and above average performance while aiming to improve feed efficiency and carcass quality. Every year 20% of the cow herd is removed and replaced...every cow must earn the right to stay. I take great pride in having visitors compliment me on the strength and udder quality of my cowherd.

A full time employee, Ben Dowling, was hired in 2014 to share the workload. This has enabled me to expand the herd and to provide more bulls to select from and offer for sale.

The Circle G bulls were weaned on September 12 and ran on greenfeed swaths and banked grass until early October. They were then started on a silage based TMR ration that is balanced to grow them and allow them to express their genetic performance potential without impairing their future soundness. No creep feed is used and no feet are trimmed. I feel it is very important to have the weaning weights totally reflect the dam's milking ability.

All the bulls 12 months and older by sale time will be semen tested prior to selling. The bulls will return to the farm after the sale and those that haven't been tested will be after the weather has warmed up and they have matured more. Delivery to your farm will follow.

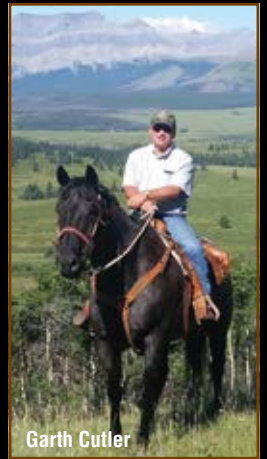
I'm especially proud of my current herd bull battery. Each one brings different dimensions to my breeding program that allows me to provide seed stock to my customers that excel in various traits. I use herd bulls and AI sires, in both breeds, that have the stats, pedigrees and epds that indicate they'll provide calving ease, superior maternal and carcass merit with positive growth and performance as I want my bulls to sire "user friendly", profitable progeny. The Simmental bulls have homozygous polled genetics stacked in their pedigrees for many generations so the odds are high that the majority of the bulls selling are homozygous polled. A number of the bulls have been tested for both the polled and black color genes.

We hope our customers can be with us in Innisfail on sale day, but with the Covid 19 health restrictions we are providing various options and ways for you to buy your bull/s. We have DLMS online bidding with video footage on every bull that's available to be viewed prior to the sale, our sight unseen buying program that has worked very well in the past and a very competent sales staff to assist you as well. See page 2 & 3 for more information and check on DLMS for updates a week prior to the sale.

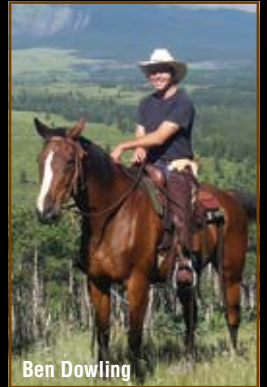
I strongly encourage you to come and view the bulls and their mothers at the farm near Lacombe prior to the sale or call and visit about the bulls. Remember that no one knows the bulls better than Ben and I! The bulls will be available for viewing in Innisfail on Thursday and Friday.

I believe this may be the strongest set of bulls that I've had...the quality runs deep. Like Corrine at P&H, I aim to offer a quality product, with great customer service, and look forward to visiting with you at the sale on February 20.

Sincerely, Garth Cutler 403.304.0896



Garth Cutler



Ben Dowling

## CUSTOMER SERVICE

We are committed to providing top service to our customers by following up on the cattle we sell. Buyer feedback helps shape our breeding programs.

We keep a select group of bulls out of the sale for customers that may require a bull/s through the breeding season.

## VIEW VIDEOS OF ALL THE BULLS ON DLMS.CA

Please note that the video footage was shot when we pictured the bulls in late December. Keep in mind that none of the bulls were a year of age and some were just 10 months old at that time.

## CALVING EASE SCORES

Calving ease is a combination of a bull's actual birth weight, his genetics (epds) and the females a bull is bred to. 50% of the equation is the management and genetics of the female. The Calving Ease Score (CE) provided is my best estimation of calving ease after evaluating the actual BW, epds, genetics and body shape of each bull.

- \*\*\*\* Suitable for use on heifers - should produce minimal calving issues
- \*\*\* Suitable for use on larger framed heifers
- \*\* Recommended for second calvers and cows
- \* Recommended for mature cows





Sire  
Red Heat



Dam 838

53

### CIRCLE G HEAT WAVE 10H

PGI337259 KAG 10H 10-Jan-20 POLLED PUREBRED

HOOKS SHEAR FORCE 38K  
WHL RED HEAT 1734E  
CMS SODA POP 422B

NICHOLS LEGACY G151  
C&D TRACY  
DRAKE POKER FACE 2X  
HPF CREAM SODA Y010  
NCB COBRA 47Y  
IPU MS. TULA 104Z  
3D RED POWER 150Z  
SKORS DREAM GAL 24X

BW	77
Act WW	934
Adj 205	858
WPDA	3.8
CE	****

R PLUS VENOM 4006B  
CIRCLE G DREAM GAL 838F  
SKORS DREAM GAL 223B

EPD'S CE 16 BW -1.4 WW 84 YW 124 MCE 10 mwwt 71 MILK 29 API 148

- First son to sell from the Red Heat sire and he's been catching people's attention for good reason...he's dark red and hairy with ideal structure and shape and has excelled at every stage of his development
- Combines the respected Shear Force and Soda Pop calving ease and maternal strength with the potent Venom genetics...Heat Wave offers much more than calving ease
- #1 bull for ADJ WW and ranks in the top 1% of the breed for BW & API, top 2% for CE & MCE, top 4% for REA and top 20% for WW & YW epds
- High quality 2 year old dam has near perfect udder structure and her very good full brother was a high seller in the 2018 sale to Shady Nook and Double D...he has matured into an impressive herdsire and is siring excellent progeny
- Heat Wave surpasses his sire on many levels and will be used by AI in the Circle G program • HOMO POLLED



54

### CIRCLE G HENCHMAN 15H

PGI337268 KAG 15H 12-Jan-20 POLLED PUREBRED

HOOKS SHEAR FORCE 38K  
WHL RED HEAT 1734E  
CMS SODA POP 422B

NICHOLS LEGACY G151  
C&D TRACY  
DRAKE POKER FACE 2X  
HPF CREAM SODA Y010  
SVS SCOUT 25X  
SVS RED SATIN 21Z  
ROLLING JN WILLY 104W  
ULTRA POWERLINE PAVIS 10S

BW	72
Act WW	810
Adj 205	759
WPDA	3.32
CE	****

SVS SCOUT 665D  
CIRCLE G YENENE 8134F  
ROLLING JN YENENE 19Y

EPD'S CE 12 BW -1.1 WW 67 YW 101 MCE 4 mwwt 61 MILK 28 API 142

- Another impressive Red Heat son that was born easily and has grown and developed well
- 72lb BW and an actual WW of 810 lbs on Sept 12 with no creep feed...

ranks in the top 2% of the breed for BW, top 4% for API, top 15% for CE and top 20% for Marbling epds

- Two year old dam is a square uddered Scout daughter that is backed by the impressive 19Y cow...Scout also sired the 2019 Checkers high seller, Circle G Red Magic 840F, that sold to Swan Lake and First Class Marketing for \$30,000
- HOMO POLLED



Dam 8134

SEE PAGE 3 FOR EPD EXPLANATION AND THE 2020 BREED AVERAGES EPD CHART





Circle G Cash 1C  
Maternal Brother



Dam 76A



Sire  
Denali

55

**CIRCLE G HIGHTIME 118H**

PG1337296 KAG 118H 21-Feb-20 POLLED PUREBRED

WHEATLAND BULL 786T  
**MAPLE LAKE DENALI 6009D**  
ACS MS WILLAMENA 9761W

SPRINGCREEK TEDDY 72U  
**SWAN LAKE NO SECRET 76A**  
DOUBLE BAR D NO SECRET25U

WHEATLAND BULL 131L  
WHEATLAND LADY 351N  
REMINGTON ON TARGET 2S  
HAAS RANCH G217  
WHEATLAND RED TEDDY 457P  
SPRINGCREEK LINNE 10R  
WHEATLAND RED HUMMER 608S  
DOUBLE BAR D NOSECRET 29S

BW	89
Act WW	818
Adj 205	821
WPDA	4.01
CE	**

EPD'S CE 8 BW 1.8 WW 73 YW 110 MCE 6 MWWT 65 MILK 29 API 127

- Stout made, muscular Denali son that will make an impact...he's a maternal brother to the popular AI sire, Circle G Cash 1C, that topped the 2016 sale at \$26,000 to Shady Nook and is now working at Robb Farms
- Moderate 89lb BW and indexed #9 for ADJ WW...ranks in the top 20% of the breed for BW, top 25% for MCE, top 30% for YW and top 35% for WW & MWWT epds
- 76A dam has ideal udder and teat structure and has been a production giant... sons to Shady Nook, Joe Kubinec, Graham Parsons and a high selling Exclusive heifer calf to Nickel Farms in the 2019 Checkers sale
- HOMO POLLED



Dam  
615

56

**CIRCLE G HARVESTOR 26H**

PG1336659 KAG 26H 17-Jan-20 POLLED PUREBRED

WHEATLAND BULL 786T  
**MAPLE LAKE DENALI 6009D**  
ACS MS WILLAMENA 9761W

R PLUS VENOM 4006B  
**CIRCLE G NO SECRET 615D**  
SWAN LAKE NO SECRET 76A

WHEATLAND BULL 131L  
WHEATLAND LADY 351N  
REMINGTON ON TARGET 2S  
HAAS RANCH G217  
NCB COBRA 47Y  
IPU MS. TULA 104Z  
SPRINGCREEK TEDDY 72U  
DOUBLE BAR D NO SECRET25U

BW	94
Act WW	892
Adj 205	790
WPDA	3.73
CE	**

EPD'S CE 8 BW 2.9 WW 83 YW 126 MCE 5 MWWT 66 MILK 25 API 124

- Powerful cherry red 3/4 brother to Lot 55...Denali really clicked with the No Secret cow family
- Dam is a model daughter of the \$50,000 Venom bull and like her paternal sisters, has excellent udder quality...Venom has become a notable sire in the breed for siring sound, eye appealing progeny with sensible birthweights, superior carcass merit and curve bending epds
- 26H ranks in the top 15% of the breed for WW, YW & CW and top 35% for BW epds \* HOMO POLLED

**CONGRATULATIONS TO ASHWORTH FARMS**

Ashworths purchased Circle G Export 51E in the 2018 sale for \$16,000. They sold his first son in their 2020 sale for \$42,000 to Kenner Simmentals in North Dakota. I take great pride in seeing my customers have success with my genetics whether it be purebred cattle or sale topping, commercial calves.





Sire  
Exclusive



Dam 86D

## 57 CIRCLE G HAMILTON 31H

PGI336657 KAG 31H 19-Jan-20 POLLED PUREBRED

R PLUS VENOM 4006B  
**CIRCLE G EXCLUSIVE 23E**  
MAR MAC TOMASINA 114B

NCB COBRA 47Y  
IPU MS. TULA 104Z  
TWIN BRAE TENNASEE  
TWIN BRAE TOMASINA 749X  
KOP CROSBY 137W  
SPRINGCREEK B GOLD 18X  
TNT ACCELERATOR S226  
TYMARC TEXAS ECHO 99W

BW	90
Act WW	888
Adj 205	792
WPDA	3.75
CE	**

SPRINGCREEK CROSBY 127A  
**GRA-TAN MS ESSENCE 86D**  
TYS ESSENCE 310Z

EPD'S CE 9 BW 3.5 WW 91 YW 131 MCE 6 MWWT 76 MILK 30 API 135

- Impressive son of the \$24,000 Exclusive bull, the Venom son that sold to Maxwells in the 2018 sale...Exclusive was used here by AI and his sons were the popular, feature sire group in the 2020 sale
- 31H has very good stats and epds to back up his good looks...ranks in the top 10% of the breed for WW, top 15% for YW, MWWT & API and top 20% for MCE & REA epds
- Dam is a square uddered, highly productive Crosby granddaughter from the Chittick program
- HOMO POLLED



Dam 45E

## 58 CIRCLE G HERDMASTER 131H

PGI336982 KAG 131H 1-Mar-20 POLLED PUREBRED

WHEATLAND BULL 786T  
**MAPLE LAKE DENALI 6009D**  
ACS MS WILLAMENA 9761W

WHEATLAND BULL 131L  
WHEATLAND LADY 351N  
REMINGTON ON TARGET 2S  
HAAS RANCH G217  
KOP CROSBY 137W  
SPRINGCREEK B GOLD 18X  
MRL RED FORCE 12U  
TYMARC MS HOLIDAY 21Z

BW	94
Act WW	776
Adj 205	844
WPDA	3.98
CE	**

SPRINGCREEK CROSBY 127A  
**GRA-TAN MS HOLIDAY 45E**  
GRA-TAN MS HOLIDAY 108B

EPD'S CE 8 BW 4.4 WW 79 YW 116 MCE 5 MWWT 68 MILK 28 API 132

- This March born Denali son is one of the top sire prospects on offer...long backed, thick topped with lots of hip and base width and the blaze "money strip"
- Denali has matured into an outstanding herd sire that visitors admire...he's moderate in frame with tremendous muscle and thickness and a super clean front end
- #5 for ADJ WW and ranks in the the top 15% of the breed for REA & API, top 20% for WW, top 25% for YW and top 30% for MWWT, CW & Marbling epds
- Dam is a blaze faced, nice uddered female that was easily my pick at the 2018 Chittick sale...she has proven to be a great investment
- HOMO POLLED



Dam 100D

## 59 CIRCLE G HANDPRINT 4H

PGI336661 KAG 4H 3-Jan-20 POLLED PUREBRED

R PLUS VENOM 4006B  
**CIRCLE G EXCLUSIVE 23E**  
MAR MAC TOMASINA 114B

NCB COBRA 47Y  
IPU MS. TULA 104Z  
TWIN BRAE TENNASEE  
TWIN BRAE TOMASINA 749X  
WHEATLAND PREDATOR 922W  
MRL MISS 836W  
SPRINGCREEK BLK TANK 1U  
D BAR C KIM 411P

BW	78
Act WW	928
Adj 205	778
WPDA	3.67
CE	***

MRL EL TIGRE 52Z  
**IPU MS. RED EL TIGRESS 100D**  
IPU MS. BLACK ATTACK 214Z

EPD'S CE 10 BW 2.3 WW 91 YW 129 MCE 7 MWWT 71 MILK 26 API 131

- A high volume, thick topped Exclusive son that is a true curve bender...78lb BW and ranks in the top 3% of the breed for REA, top 15% for WW, top 20% for MCE, top 25% for BW, YW & API and top 30% for CE & CW epds
- \$18,000 Labatte dam has proven to have a short gestation period...her 2020 sale bull had an 81lb BW and sold to Oak Hill Farms, SK for \$11,000
- HOMO POLLED





Sire  
Frontier



Dam 641B  
(pictured as a 2 year old)

60

### CIRCLE G HIGH GRADE 27H

PGI336653 KAG 27H 17-Jan-20 POLLED PUREBRED

BOZ REDCOAT  
**BBS FRONTIER F8**  
BBS RINGMAN B40

KWA FLYF RED MOUNTAIN 16Z  
**LFE RS AMBER 641B**  
LFE RS AMBER 158X

HERCULES 538P  
BOZ RED LADY  
MRL RINGMAN 112Z  
BBS GEMINI Y53  
IPU RED WESTERN 49X  
KWA MS ROCK 14X  
WHEATLAND RED ACE 747T  
LFE KISS & TELL 170R

BW	90
Act WW	940
Adj 205	820
WPDA	3.93
CE	**

EPD'S CE 10 BW 1.3 WW 83 YW 127 MCE 8 MWWT 71 MILK 29 API 141

- First son to sell from the \$20,000 Frontier sire that was the high seller at the 2019 Bata Bros sale in North Dakota and was purchased with Shady Nook and Double D...the Boz Redcoat sire is highly proven and can be found back in the pedigree of many top cattle
- Frontier's dam is a donor cow at Batas and also has a son working at McMillen Ranching
- #10 for ADJ WW and ranks in the top 5% of the breed for Marbling, top 10% for MCE & API, top 15% for BW, top 30% for CE and top 35% for YW epds
- Excellent Red Mountain sired dam that was my pick of the red heifers in the 2016 LFE sale and she stems from the highly regarded Amber cow family
- HOMO POLLED



61

### CIRCLE G HARD TOP 25H

PGI337253 KAG 25H 17-Jan-20 POLLED PUREBRED

BOZ REDCOAT  
**BBS FRONTIER F8**  
BBS RINGMAN B40

MRL MATRIX 38B  
**KKH JEWEL 122E**  
LAR D BAR C JEWEL 939W

HERCULES 538P  
BOZ RED LADY  
MRL RINGMAN 112Z  
BBS GEMINI Y53  
MRL EL TIGRE 52Z  
MRL MISS 476U  
D BAR C TRENDSETTER 105T  
LAR D BAR C JEWEL 7124T

BW	89
Act WW	820
Adj 205	749
WPDA	3.43
CE	**

EPD'S CE 7 BW 3.4 WW 83 YW 123 MCE 6 MWWT 72 MILK 30 API 123

- Another top Frontier son...ranks in the top 20% of the breed for WW, YW & CW, top 25% for MWWT and top 35% for Milk & Marbling epds
- Dam was a \$10,000 purchase out of the Checkers sale from Tri-K and has matured into an easy keeping, high volume cow
- HOMO POLLED



62

### CIRCLE G HEADSHOT 24H

PGI336989 KAG 24H 16-Jan-20 POLLED PUREBRED

SUNRISE CAPTAIN BLAZE 5C  
**PERKS FREELANCE 251F**  
PERKS RED BETTY 251A

R PLUS VENOM 4006B  
**CIRCLE G RED CARLA 781E**  
CG RED CARLA 792T

SVS CAPTAIN MORGAN 11Z  
SUN RISE BLACK 45R  
WHEATLAND BULL 786T  
KOP MS TRADEMARK 110W  
NCB COBRA 47Y  
IPU MS. TULA 104Z  
DOUBLE BAR D BOLT 13P  
TAYR MISS CARLA 93C

BW	89
Adj WW	814
Adj 205	741
WPDA	3.39
CE	**

EPD'S CE 7 BW 3.7 WW 79 YW 121 MCE 4 MWWT 66 MILK 27 API 117

- High quality baldy son of the Freelance bull that was purchased from Perkin Land & Cattle...Darryl raves about the sire and the job he is doing for them
- Ranks in the top 15% of the breed for YW and top 20% for WW & CW epds
- Dam is another outstanding Venom daughter with near perfect udder structure and she's backed by the highly productive Carla cow family



Dam 781

RED SIMMENTAL





Dam 145

63

**CIRCLE G HOMEGROWN 125H**

PG1337292 KAG 125H 23-Feb-20 POLLED PUREBRED

MRL MISSILE 138C  
**LRX IGNITION 222E**  
 IPU MS. LINER 56U 266Y

D BAR C NEWSMAN 17N  
**CG BLK JESSE 145Y**  
 CG BLACK JESSE 769T

COME AS U R RED ROCKET  
 MRL MISS 2423Z  
 SPRINGCREEK LINER 56U  
 IPU MS RANCH HAND 74U  
 TNT CRUZER K265  
 KAPPES LADY DAKOTA H114  
 DOUBLE BAR D DRIFTWOOD 83  
 CCC BLACK JESSE 911J

BW	101
Act WW	832
Adj 205	849
WPDA	4.12
CE	*

EPD'S CE 5 BW 5.2 WW 89 YW 133 MCE 4 MWWT 72 MILK 27 API 125

- One of the younger bulls selling and he's one of the deepest bodied with loads of rib shape and volume
- Sired by Ignition who consistently transmits his thickness and structural soundness to his calves...his first daughters are just starting to calve and have so much mass and volume with exceptional udder quality
- #3 for ADJ WW and ranks in the top 5% of the breed for WW & CW, top 10% for YW & REA & top 20% for MWWT epds
- Dam ranks among the top cows at CG and has placed 3 very good daughters in the cowherd and 2 good sons have sold well to Redrich Farms and Shady Nook • HOMO POLLED



Sire Ignition



64

**CIRCLE G HOME PLATE 72H**

PG1336992 KAG 72H 29-Jan-20 POLLED PUREBRED

**MAPLE LAKE DENALI 6009D**

NUG ROYAL RED 324A  
**CIRCLE G ZEOLA 763E**  
 CIRCLE G ZEOLA 236Z

LFE BLACK LAKOTA 385W  
 TRIPLE C SMARTY PANTS R  
 COL D BAR C VEGAS 50X  
 D-BAR-C ZEOLA 846H

BW	105
Act WW	828
Adj 205	792
WPDA	3.65
CE	*

EPD'S CE 5 BW 5.1 WW 76 YW 115 MCE 3 MWWT 60 MILK 22 API 117

- Visitors are noticing this long backed Denali son that will be sure to sire pounds and performance...ranks in the top 25% of the breed for YW and top 30% for WW & CW epds
- Royal Red sired dam is backed by the very reliable, highly maternal Zeola cow family...the outstanding Lot 67 bull is her maternal brother



65

**CIRCLE G HOMEBUILDER 91H**

PG1337504 KAG 91H 9-Feb-20 POLLED PUREBRED

WHEATLAND BULL 786T  
**MAPLE LAKE DENALI 6009D**  
 ACS MS WILLAMENA 9761W

TLSS PILOT 122Z  
**CIRCLE G RED CARLA 5140C**  
 CG CARLA 7130T

WHEATLAND BULL 131L  
 WHEATLAND LADY 351N  
 REMINGTON ON TARGET 2S  
 HAAS RANCH G217  
 TLSS PILOT 106X  
 TLSS FLIRT'S DREAMGIRL 5X  
 DOUBLE BAR D JAXON 195P  
 CG CARLA 560R

BW	96
Act WW	804
Adj 205	768
WPDA	3.72
CE	**

EPD'S CE 7 BW 3.4 WW 70 YW 106 MCE 5 MWWT 56 MILK 21 API 125

- Dark red Denali son that has his sire's length and neck extension...he will mature into an impressive herd sire
- Dam has placed an excellent daughter in the cowherd that has her mother's super udder structure and teat shape



Sire Go Daddy

66

**CIRCLE G HANDBOOK 73H**

PG1337289 KAG 73H 30-Jan-20 POLLED PUREBRED

MRL EL TIGRE 52Z  
**WLB GO DADDY 52Z 368D**  
 BLACKSAND TESS 56A

CDI SHEAR FORCE 41T  
**D BAR C CORDELIA 43X**  
 D BAR C CORDELIA 813U

WHEATLAND PREDATOR 922W  
 MRL MISS 836W  
 HARVIE JDF WALLBANGER111X  
 SPRINGCREEK BLK TESS 25T  
 HOOKS SHEAR FORCE 38K  
 CDI MS SAVANNA 3R  
 DOUBLE BAR D DRIFTWOOD 83  
 NLC C79 CORDELIA

BW	88
Act WW	800
Adj 205	740
WPDA	3.54
CE	***

EPD'S CE 9 BW 2.2 WW 76 YW 115 MCE 5 MWWT 60 MILK 21 API 131

- A cherry red bull out of two very good black parents...Go Daddy has sired lots of thickness and muscle shape and his daughters are productive cows
- Balanced stats and epds...ranks in the top 15% of the breed for REA & API, top 25% for BW, top 30% for CE & REA and top 35% for YW & Marbling epds
- Dam has produced well with a son to Henry Opendries and 2 daughters are working at Shady Nook





EPD'S CE 14 BW 0.9 WW 78 YW 117 MCE 9 MWWT 67 MILK 28 API 148

## 67 CIRCLE G HEARTBEAT 9H

PRS1337295 KAG 9H 10-Jan-20  
POLLED 7/8 PERCENTAGE

RFS DAYTONA D73  
**KS FERRARI F64**  
KS ADRI A117

RFS BULLETPROOF B42  
BBS MISS ACE Y3  
KS ATOMIC W506  
TNT MISS S47

BW	85
Act WW	910
Adj 205	772
WPDA	3.7
CE	***

COL D BAR C VEGAS 50X  
**CIRCLE G ZEOLA 236Z**  
D-BAR-C ZEOLA 846H

D BAR C NEWSMAN 17N  
COL D BAR C GLOW 406P  
D-BAR-C FORTUNE 607F  
D BAR C ZEOLA 638F

- Heartbeat gets the nod to leadoff the strong Ferrari sire group...Ferrari was purchased as one of the high sellers in the 2019 Kenner sale in North Dakota and provides some fresh, outcross genetics



Sire Ferrari

- Moderate 85lb BW with a short gestation period as is evident by his shorter ears...#7 for ADJ WW and ranks in the top 2% of the breed for API, top 10% for CE & Marbling and top 15% for BW epds
- Dam is very good uddered and is backed by the highly regarded Zeola cow family...a maternal brother sired high quality females at the Lacombe Research Centre • HOMO POLLED



## 68 CIRCLE G HANDS UP 16H

PRS1336986 KAG 16H 12-Jan-20 POLLED 7/8 PERCENTAGE

**KS FERRARI F64**

R PLUS VENOM 4006B  
**CIRCLE G YACHI 784E**  
CIRCLE G YACHI 4114B

NCB COBRA 47Y  
IPU MS. TULA 104Z  
WXR REDPATHS KOSMO 38Z  
ROLLING JN YACHI 1Y

BW	90
Act WW	792
Adj 205	713
WPDA	3.25
CE	**

EPD'S CE 12 BW 2.1 WW 81 YW 120 MCE 8 MWWT 66 MILK 26 API 139

- Closely resembles his sire...hairy, long backed and sound and he has a very good Venom sired dam
- Ranks in the top 10% of the breed for API, top 15% for MCE, top 20% for CE, WW & YW and top 30% for BW epds



## 69 CIRCLE G HOOEY 76H

PRS1336652 KAG 76H 31-Jan-20 POLLED 7/8 PERCENTAGE

**KS FERRARI F64**

KWA FLYF RED MOUNTAIN 16Z  
**CMS JUNO 406B**  
COULEE CREST FINESSE 33Z

IPU RED WESTERN 49X  
KWA MS ROCK 14X  
SSP UNLEASHED 826U  
COULEE CREST TEAL 34T

BW	92
Act WW	812
Adj 205	748
WPDA	3.61
CE	**

EPD'S CE 10 BW 1.9 WW 74 YW 113 MCE 7 MWWT 67 MILK 30 API 141

- If you're looking to moderate frame and add substance and carcass quality, here's your bull
- Ranks in the top 3% of the breed for Marbling, top 10% for CW & API and top 25% for BW epds
- Square uddered, high volume Red Mountain dam that has a son working at Spring Creek Colony and an awesome Exclusive daughter about to enter the cowherd • HOMO POLLED



Dam 406



## 70 CIRCLE G HEAT 126H

PG1337272 KAG 126H 23-Feb-20 POLLED PUREBRED

HOOKS SHEAR FORCE 38K  
**WHL RED HEAT 1734E**  
CMS SODA POP 422B

NICHOLS LEGACY G151  
C&D TRACY  
DRAKE POKER FACE 2X  
HPF CREAM SODA Y010  
KWA FLYF RED MOUNTAIN 16Z  
SWAN LAKE NO SECRET 76A  
TLSS PILOT 122Z  
CIRCLE G ZEOLA 204Z

BW	83
Act WW	684
Adj 205	762
WPDA	3.39
CE	****

EPD'S CE 14 BW 0.2 WW 73 YW 110 MCE 9 MWWT 65 MILK 28 API 144

- An end of February born Red Heat calving ease prospect that has much merit... ranks in the top 3% of the breed for API, top 5% for MCE, top 10% for CE, BW & Marbling and top 20% for REA epds
- Excellent Cash two year old mother...her dam is one of the best cows at Circle G and has the powerful Lot 78 bull in the sale • HOMO POLLED





**71** **CIRCLE G HORIZON 110H**  
 PRS1336658 KAG 110H 13-Feb-20 POLLED 7/8 PERCENTAGE

RFS DAYTONA D73	RFS BULLETPROOF B42	BW	<b>92</b>
<b>KS FERRARI F64</b>	BBS MISS ACE Y3	Act WW	<b>850</b>
KS ADRI A117	KS ATOMIC W506	Adj 205	<b>837</b>
	TNT MISS S47	WPDA	<b>4.01</b>
	NCB COBRA 47Y	CE	<b>***</b>
R PLUS VENOM 4006B	IPU MS. TULA 104Z		
<b>CIRCLE G ROSE 666D</b>	SPRINGCREEK LOTTO 52Y		
BLACKSAND ROSE 30A	SPRINGCREEK ROSE 21R		

EPD'S CE 12 BW 2.1 WW 85 YW 128 MCE 10 MWWT 71 MILK 29 API 141

- Blaze face Ferrari son that catches your eye with his style and correct structure...the "money strip" should be highly heritable and will add value to his progeny
- Ranks in the top 5% of the breed for MCE, top 10% for API, top 20% for CE & CW, top 25% for YW and top 30% for BW & WW epds
- Very good blaze face Venom dam is a member of the Rose cow family that were a feature in the Black Sand dispersal



**72** **CIRCLE G HEADS UP 8H**  
 PG1337265 KAG 8H 10-Jan-20 POLLED PUREBRED

W/C LOADED UP 1119Y	REMINGTON LOCK N LOAD 54U	BW	<b>71</b>
<b>SFI SAVAGE D20</b>	AUBREYS BLACK BLAZE III	Act WW	<b>722</b>
CAJS SWEET EMOTION 42Z	HTP/SVF DURACELL T52	Adj 205	<b>682</b>
	JM STEEL MY HEART	WPDA	<b>2.93</b>
	LFE STRAIT UP 454W	CE	<b>****</b>
WFL ABSOLUTE 51Y	WFL MS BLACK FLASH 8068U		
<b>CIRCLE G BLK JESSE 892F</b>	RF CAPTAIN BLACK 430B		
CIRCLE G BLACK JESSE 653D	CG BLACK JESSE 566R		

EPD'S CE 13 BW 0.4 WW 66 YW 95 MCE 7 MWWT 51 MILK 18 API 123

- A sure fire calving ease prospect that will sire calves that are born easily, grow well and be highly maternal...the odds of his calves inheriting his blaze face are very high
- AI sire, Savage, combined with an excellent uddered Absolute daughter locks in the calving ease...8H ranks in the top 4% of the breed for CE, top 10% for BW and top 15% for MCE epds
- HOMO POLLED



**73** **CIRCLE G HIGH CALIBER 3H**  
 PG1337260 KAG 3H 2-Jan-20 POLLED PUREBRED

HOOKS SHEAR FORCE 38K	NICHOLS LEGACY G151	BW	<b>64</b>
<b>WHL RED HEAT 1734E</b>	C&D TRACY	Act WW	<b>850</b>
CMS SODA POP 422B	DRAKE POKER FACE 2X	Adj 205	<b>765</b>
	HPF CREAM SODA Y010	WPDA	<b>3.35</b>
	SVS SCOUT 25X	CE	<b>****</b>
SVS SCOUT 665D	SVS RED SATIN 21Z		
<b>CIRCLE G MISS CANDACE 849F</b>	IPU RED SPECIALIST 70T		
MAJESTIC MISS CANDACE 22A	MAJESTIC MISS CANDACE 14Y		

EPD'S CE 16 BW -2.6 WW 67 YW 102 MCE 9 MWWT 61 MILK 27 API 147

- Red Heat sired a real nice set of calves out of first calf heifers that were born easily and have developed well...his daughters should make great cows
- 3H ranks in the top 1% of the breed for BW, top 2% for CE and top 3% for API epds
- Scout sired dam is a beauty and has much production potential

Inset SVS Scout 665D - Sire of Dam



**74** **CIRCLE G HOBBS 34H**  
 PG1337270 KAG 34H 20-Jan-20 POLLED PUREBRED

HOOKS SHEAR FORCE 38K	NICHOLS LEGACY G151	BW	<b>76</b>
<b>WHL RED HEAT 1734E</b>	C&D TRACY	Act WW	<b>784</b>
CMS SODA POP 422B	DRAKE POKER FACE 2X	Adj 205	<b>759</b>
	HPF CREAM SODA Y010	WPDA	<b>3.32</b>
	WHEATLAND CURRENT AFFAIR	CE	<b>****</b>
TPP CROCUS CORNERSTONE 17D	BLCC MISS RED ROCK 83W		
<b>CIRCLE G DEB 8120F</b>	WHEATLAND BULL 334A		
CIRCLE G DEB 642D	CIRCLE G DEB 436B		

EPD'S CE 18 BW -1.3 WW 70 YW 101 MCE 11 MWWT 59 MILK 24 API 152

- Closing the red section with a sleep all night, low BW bull with calving ease stacked in his pedigree for generations
- Ranks in the top 1% of the breed for CE, MCE & API and top 2% for BW epds





**75** **CIRCLE G HAT TRICK 11H**  
 BPG1336971 KAG 11H 10-Jan-20 POLLED PUREBRED

HSF BETTER THAN EVER	SVF/NJC MO BETTER M217	BW <b>95</b>
<b>HARKERS ICON</b>	HSF VICTORIA P30	Act WW <b>984</b>
WS KATIE S125	WS M197	Adj 205 <b>835</b>
	WS MS DISTINCTION L143	WPDA <b>4</b>
	SVS OPEN RANGE 28Y	CE <b>**</b>
PRL ALAMO ARMOUR 13 111A	MS PORTER 10 69X	
<b>CIRCLE G KEEPSAKE 589C</b>	LFE ENTOURAGE 337U	
LFE BS KEEPSAKE 613Z	LFE BS KEEPSAKE 248T	

EPD'S CE 7 BW 5 WW 88 YW 131 MCE 4 MWWT 72 MILK 28 API 123

- Excellent sire prospect with loads of potential...Hat Trick has had my attention from an early age
- His mass and muscle along with lots of base width and thickness, combined with his "look at me" presence, have also caught the eye of top cattle people that have seen him
- The Icon AI sire offers a different genetic option to many pedigrees and the bottom side of the pedigree is highly maternal and proven with the productive LFE Keepsake cow family...the 613Z cow has built an impressive cow family here
- #7 for ADJ WW with a balanced set of epds
- Hat Trick will be collected and used heavily in the Circle G program
- HOMO POLLED HETERO BLACK



**76** **CIRCLE G HIGHLINE 43H**  
 BPG1336977 KAG 43H 23-Jan-20 POLLED PUREBRED

HSF BETTER THAN EVER	SVF/NJC MO BETTER M217	BW <b>92</b>
<b>HARKERS ICON</b>	HSF VICTORIA P30	Act WW <b>835</b>
WS KATIE S125	WS M197	Adj 205 <b>757</b>
	WS MS DISTINCTION L143	WPDA <b>3.58</b>
	WS PILGRIM H182U	CE <b>**</b>
PROFIT	WAGR PANARAMA 204Z	
<b>EARLY SUNSET QUEEN 119D</b>	KENCO/MF POWERLINE 204L	
EARLY SUNSET QUEEN 172W	E S QUEEN 70S	

EPD'S CE 6 BW 4.5 WW 77 YW 114 MCE 2 MWWT 59 MILK 20 API 113

- Another very interesting Icon son that shouldn't be overlooked...he gives up some frame and performance to his powerful brother, 11H, but he's made so right and oozes quality
- These two Icon sons were the only calves from him born here and they have both excelled...that really impresses me
- Dam is an impressive, square uddered Profit daughter from Early Sunset that is a maternal sister to Jimmy's \$22,000 high selling bull in 2019 to the Bradfords
- HOMO POLLED HOMO BLACK

**All the sale bulls are double vaccinated with FUSOGARD for the prevention of footrot**







77

**CIRCLE G SN HALLMARK 87H**

Applied for KAG 87H 7-Feb-20 POLLED PUREBRED

WFL WESTCOTT 24C  
RF **CAPACITY 742E**  
RF FAMOUS 409B

R PLUS RELOAD 2006Z  
WFL **RED SAGE 506C**  
WFL RED SAGE 1003Y

TNT 90 PROOF Z401  
WFL SWEET LICIOUS 1044X  
SVS CAPTAIN MORGAN 11Z  
RF FAMOUS 12Y  
R PLUS HARD ROCK 145X  
IPU RED BARONESS 1T  
R PLUS REDGE 8018U  
3D MISS SAGE 140W

BW	102
Act WW	828
Adj 205	785
WPDA	3.80
CE	**

EPD'S CE 7 BW 4.8 WW 85 YW 123 MCE 3 MWWT 69 MILK 26 API 109

- Hallmark is a royally bred sire prospect that needs little introduction... he is the result of buying the high selling pregnant recipient at the 2019 SimPower sale from Bohrsen Marketing
- He's a son of the \$77,500 RF Capacity 742E bull with the famed WFL Sage 506C cow as his dam...an ET full brother was the 2019 Agribition Champion as a calf and sold to Lewis Farms and CDN Sires for \$60,000 last year
- 87H's genetics weren't given a chance to express themselves fully until he was weaned as his recipient mother was sub par and no creep feed is used at Circle G...he's showing his true colours now and gaining well
- HOMO POLLED



78

**CIRCLE G HIGH TEST 97H**

BPRS1336651 KAG 97H 10-Feb-20  
POLLED 7/8 PERCENTAGE

RFS DAYTONA D73  
KS **FERRARI F64**  
KS ADRI A117

TLSS PILOT 122Z  
CIRCLE G **BLK ZEOLA 468B**  
CIRCLE G ZEOLA 204Z

RFS BULLETPROOF B42  
BBS MISS ACE Y3  
KS ATOMIC W506  
TNT MISS S47  
TLSS PILOT 106X  
TLSS FLIRT'S DREAMGIRL 5X  
OLF ODIN U5  
D BAR C ZEOLA 62X

BW	92
Act WW	932
Adj 205	894
WPDA	4.33
CE	**

EPD'S CE 10 BW 3.1 WW 92 YW 134 MCE 9 MWWT 80 MILK 34 API 138

- High Test is a powerhouse with width, depth and dimension to burn and has the "herd bull" look...he's definitely the easiest fleshing, softest made bull in the pen
- #1 indexing percentage bull for ADJ WW and boasts an impressive set of stats...ranks in the top 15% of the breed for WW, MWWT, REA & API, top 20% for YW & CW and top 30% for CE, Milk and Marbling epds
- Dam is one of the very best cows at CG and her dam is also outstanding with sons selling to Soderglen Ranches and Mitchell Cattle Co. • HOMO POLLED



*Video By*  
**Livestock+**

Bridget Andrews - (306) 631-9254

**BLACK SIMMENTAL**





## 79 CIRCLE G HEARTLAND 14H

BPG1337267 KAG 14H 12-Jan-20 POLLED PUREBRED

WELSH'S WARSAW 312Z  
HART STATE OF WAR 056C  
HART MISS 102A

ADAIRRANCH SUBSTANCE 364C  
CIRCLE G CROCUS 8101F  
LFE BS CROCUS 61C

FBFS WARSAW 068W  
WELSHS ROSIE 102W  
SKORS BLACK ENTICER 287Y  
HART MISS X534  
ASR SUBSTANCE X009  
ADAIR RANCH 364A  
LFE GOTHAM 819Y  
LFE CROCUS 123X

BW	87
Act WW	918
Adj 205	854
WPDA	3.76
CE	**

EPD'S CE 9 BW 2.3 WW 91 YW 138 MCE 3 MWWT 78 MILK 32 API 139

- Heartland is a bigger statured, rugged bull that offers lots of bells and whistles
- #2 for ADJ WW and ranks in the top 5% of the breed for CW, top 15% for YW & API, top 20% for WW, top 25% for BW and top 30% for CE epds
- State of War is marketed as a calving ease AI sire but packs a lot of punch
- Two year old dam calved at 23 months of age with a slight assist but bred back and will calve early in 2021...she is a daughter of the LFE 61C cow who arrived here as the \$16,000 right to pick Lewis Farm's 2015 heifer calves and is backed by great females
- HOMO POLLED HOMO BLACK

## 80 CIRCLE G HIGH VOLTAGE 29H

BPG1337262 KAG 29H 18-Jan-20 POLLED PUREBRED

HART STATE OF WAR 056C

WLB BOUNTY HUNTER 365C  
CIRCLE G BLK MUMBO 858F  
CIRCLE G BLK MUMBO 675D

LFE BOUNTY 3118Z  
LFE BS MARY 26A  
RF CAPTAIN BLACK 430B  
D BAR C BLK MUMBO 894U

BW	73
Act WW	797
Adj 205	764
WPDA	3.35
CE	****

EPD'S CE 15 BW 0.1 WW 85 YW 135 MCE 9 MWWT 70 MILK 27 API 150



- A State of War son that offers calving ease while not sacrificing much growth and performance... he's a true curve bender
- Ranks in the top 1% of the breed for API, top 2% for CE & CW, top 4% for MCE, top 5% for BW, top 10% for YW and top 20% for WW epds
- Dam is a real nice Bounty Hunter 2 year old that is backed by the Mumbo cow family that traces back to one of my favourite cows in the herd, 894U...see the Lot 82 footnote
- HOMO POLLED HOMO BLACK

Sire of Dam Bounty Hunter

## 81 CIRCLE G HEIR 35H

BPG1336660 KAG 35H 20-Jan-20 POLLED PUREBRED

MRL MISSILE 138C  
LRX IGNITION 222E  
IPU MS. LINER 56U 266Y

RF CAPTAIN BLACK 430B  
CIRCLE G ZEOLA 628D  
D BAR C ZEOLA 62X

COME AS U R RED ROCKET  
MRL MISS 2423Z  
SPRINGCREEK LINER 56U  
IPU MS RANCH HAND 74U  
SVS CAPTAIN MORGAN 11Z  
TLG FLIRTIN WITH YOU  
D BAR C NEWSMAN 17N  
D BAR C ZEOLA 256M

BW	95
Act WW	814
Adj 205	732
WPDA	3.45
CE	**

EPD'S CE 8 BW 4 WW 87 YW 131 MCE 6 MWWT 65 MILK 22 API 127



Sire Ignition

- 35H is a very complete, well balanced Ignition son that will be a strong breeding bull...Ignition's first set of sons were popular in last year's sale and went out and bred well
- Ignition daughters are just starting to calve and they are absolutely awesome...moderate sized with lots of volume and rib shape and beautiful udders
- Ranks in the top 3% of the breed for CW & REA and top 10% for WW & YW epds
- The Zeola cow family is one of the most productive at CG so it's no surprise that it has grown to be the biggest in numbers

### ACT WW

All the bull calves were weaned on September 12 and their weights taken then.

## BLACK SIMMENTAL





**82**

**CIRCLE G HOMETOWN 44H**

BPRS1337279 KAG 44H 23-Jan-20  
POLLED 7/8 PERCENTAGE

MR TR HAMMER 308A ET  
**TJSC HAMMER TIME 35D**  
TJSC SO SWEET 104X

WS EXPRESSWAY S34  
**D BAR C BLK MUMBO 894U**  
D BAR C BLK NUMBO 042K

MR NLC UPGRADE U8676  
SVF/HS EXPECTING A DREAM  
SVF STEEL FORCE S701  
KS MISS SHES SO SWEET 9  
HART FOUR LANE M165  
WS MISS ROCK & ROLL M94  
MEYERS MOST WANTED 25H  
MEYER RANCH 119E

BW	100
Act WW	982
Adj 205	883
WPDA	4.21
CE	*

EPD'S CE 7 BW 4.6 WW 89 YW 136 MCE 3 MWWT 77 MILK 33 API 132

- Hometown is a bull I really like as he puts so many good things together in a nice package...he's muscular, super sound, very long spined and has an excellent set of epds
- Sired by the impressive 2018 NWSS Reserve Champion Bull, Hammer Time 35D...he's got great phenotype and is backed by an outstanding cow family
- 44H ranks in the top 10% of the breed for Marbling, top 15% for MWWT, top 20% for YW, CW & API and top 25% for WW & Milk epds
- Dam is truly a model female even at 13 years of age and has a stellar production record
- HOMO POLLED HOMO BLACK



Dam 894



**83**

**CIRCLE G HAMMER 41H**

BPRS1337288 KAG 41H 22-Jan-20  
POLLED 7/8 PERCENTAGE

**TJSC HAMMER TIME 35D**

DOUBLE BAR D DRIFTWOOD 83  
**D BAR C BLK CORDELIA 982W**  
CCC BLK CORDELIA 024K

DRIFTING "M" LP 59L  
DOUBLE BAR D LILI 59M  
MEYERS MOST WANTED 25H  
NLC C79 CORDELIA

BW	97
Act WW	972
Adj 205	870
WPDA	4.15
CE	**

EPD'S CE 7 BW 4.3 WW 85 YW 129 MCE 4 MWWT 70 MILK 27 API 127

- Another Hammer Time 35D son that's long backed, full of meat and is extremely sound
- 12 year old blaze faced dam is a favourite with visitors and is a direct daughter of the popular Driftwood bull that sired so many top cattle for us...her sons have sold to Stahlville Farming, Wade Challand, Silas Chapman and one was used here at Circle G



Sire Hammer Time



Dam 982W



**84**

**CIRCLE G HOME RUN 81H**

BPG1337293 KAG 81H 4-Feb-20 POLLED PUREBRED

MRL MISSILE 138C  
**LRX IGNITION 222E**  
IPU MS. LINER 56U 266Y

D BAR C TRACTION 126T  
**CG BLK SATIN 160Y**  
D BAR C BLK SATIN 50R

COME AS U R RED ROCKET  
MRL MISS 2423Z  
SPRINGCREEK LINER 56U  
IPU MS RANCH HAND 74U  
DOUBLE BAR D DRIFTWOOD 83  
D BAR C RUBY 938J  
D BAR C NORWAY 12N  
D BAR C BLK SATIN 337N

BW	96
Act WW	888
Adj 205	836
WPDA	4.02
CE	**

EPD'S CE 8 BW 4.1 WW 87 YW 128 MCE 5 MWWT 72 MILK 28 API 132

- Take a close look here as this bull not only looks good and has good stats and numbers...he is also genetically very strong
- Sired by Ignition and his dam ranks right near the top here with sons selling to the Weisgerbers, Attema Farms, Jason Slomp, Robertson Livestock and the Lacombe Research Centre (ask Cletus how well that bull has bred and looks... his daughters are phenomenal)
- #6 for ADJ WW and ranks in the top 15% of the breed for WW & API, top 20% for YW and top 30% for MCE & REA epds • HOMO POLLED



Dam 160





## 85 CIRCLE G HURRICANE 38H

BPG1336654 KAG 38H 21-Jan-20 POLLED PUREBRED

MRL EL TIGRE 52Z  
**WLB GO DADDY 52Z 368D**  
 BLACKSAND TESS 56A

LFE POWER WAGON 365A  
**LFE BS CHARO 90C**  
 LFE BS CHARO 127Z

WHEATLAND PREDATOR 922W  
 MRL MISS 836W  
 HARVIE JDF WALLBANGER111X  
 SPRINGCREEK BLK TESS 25T  
 3D BLK FULL THROTTLE 483X  
 LFE BS NICKI 26W  
 LFE PUNK 407U  
 KLC MISS RIGHT MOVE 307N

BW	94
Act WW	896
Adj 205	793
WPDA	3.81
CE	**

EPD'S CE 7 BW 4.7 WW 86 YW 132 MCE 2 MWWT 68 MILK 25 API 120

- One of the stoutest, deepest ribbed bulls in the group and he's shown that extra dimension from an early age
- #13 indexing bull for ADJ WW and ranks in the top 15% of the breed for YW & REA and top 25% for WW & CW epds
- Dam is a moderate framed LFE female with a quality udder
- HOMO POLLED



## 86 CIRCLE G HARDCOPY 79H

BPG1336655 KAG 79H 1-Feb-20 POLLED PUREBRED

MRL EL TIGRE 52Z  
**WLB GO DADDY 52Z 368D**  
 BLACKSAND TESS 56A

OLF OTIS Y43  
**WJS DARLINGTON 614D**  
 WJS MS FULL MONEY 407B

WHEATLAND PREDATOR 922W  
 MRL MISS 836W  
 HARVIE JDF WALLBANGER111X  
 SPRINGCREEK BLK TESS 25T  
 OLF ODIN U5  
 OLF MISS GUNNER W8  
 MADER FULL MONEY 145X  
 XXX MS 20/20 871T

BW	90
Act WW	904
Adj 205	846
WPDA	4.04
CE	**

EPD'S CE 10 BW 3.3 WW 97 YW 144 MCE 7 MWWT 77 MILK 28 API 129

- Powerful Go Daddy son that will sire pounds and performance and his daughters will make terrific cows...79H's full sister is getting close to calving as I write this and is very, very good; I have high expectations for her
- #4 bull for ADJ WW at 846lbs with no creep feed and ranks in the top 3% of the breed for WW & YW, top 4% for CW, top 15% for REA and top 25% for CE, MWWT & API epds
- HOMO POLLED



## 87 CIRCLE G HERO 54H

BPRS1336985 KAG 54H 24-Jan-20 POLLED 7/8 PERCENTAGE

CCLT ALLIANCE 91C  
**WHEATLAND BULL 7134E**  
 WHEATLAND LADY 2070Z

MR CCF VISION  
**KIN KIN BRIGHT VISION 16E**  
 RJY BLK CORDIELA 6S

WS PILGRIM H182U  
 BROOKS SHINIA 1A  
 WHEATLAND PREDATOR 922W  
 ANGUS/ANGUS  
 MR NLC UPGRADE U8676  
 GCF MISS ELSA  
 LFE RED TANKER 490P  
 RJY CORDIELA 5P

BW	77
Act WW	760
Adj 205	712
WPDA	3.28
CE	****

EPD'S CE 11 BW 1.1 WW 72 YW 105 MCE 5 MWWT 54 MILK 18 API 123

- One of the most popular bulls in the pen...his blaze face and thickness are noticed
- Sired by the \$22,000 Wheatland 7134E bull that was purchased with Ter-Ron Farms...Terry really likes the first set of his daughters as they get close to calving
- Modest 77lb BW and ranks in the top 10% of the breed for BW and top 15% for CE epds
- Dam is also blaze faced and her first son was popular in the 2020 sale and sold to Bruce Hogg







88

**CIRCLE G HUNK 95H**

BPG1339114 KAG 95H 9-Feb-20 POLLED PUREBRED

LFE CASH 386D  
**LFE GAME FACE 338F**  
 LFE BS AMBER 60D

SKORS BLACK ENTICER 4W  
**SKORS JULIET 26E**  
 SKORS JULIET 201C

LFE BOUNTY 3118Z  
 LFE BS FIRSTBASE 39B  
 NCB COBRA 47Y  
 LFE BS AMBER 125B  
 SHS ENTICER P1B  
 SKORS MISS JOKER 10N  
 3D BLK FULL THROTTLE 483X  
 SKORS MS JULIET 10W

BW	80
Act WW	810
Adj 205	824
WPDA	3.75
CE	***

EPD'S CE 7 BW 3.9 WW 81 YW 127 MCE 5 MWWT 64 MILK 24 API 120

- Top prospect that came in dam from a good 4W daughter that was purchased in the Skor Simmentals dispersal
- 95H is a twin but had his mother all to himself after his brother was grafted onto another cow...he grew and developed well
- #8 for ADJ WW and ranks in the top 10% of the breed for CW & REA, top 15% for YW and top 30% for WW epds



89

**CIRCLE G HAWKE 78H**

BPRS1336995 KAG 78H 1-Feb-20  
 POLLED/SCURRED 7/8 PERCENTAGE

CCLT ALLIANCE 91C  
**WHEATLAND BULL 7134E**  
 WHEATLAND LADY 2070Z

MRK PRIORITY 3C  
**IPU MS. BLACKBIRD 12E**  
 IP MS. EL TIGRESS 50B

WS PILGRIM H182U  
 BROOKS SHINIA 1A  
 WHEATLAND PREDATOR 922W  
 ANGUS/ANGUS  
 MR CCF VISION  
 LRX MS BLACK 91A  
 MRL EL TIGRE 52Z  
 IPU MS. LINER 56U 118Y

BW	78
Act WW	834
Adj 205	804
WPDA	3.72
CE	***

EPD'S CE 11 BW 1.1 WW 83 YW 123 MCE 6 MWWT 62 MILK 21 API 124

- Very complete, well balanced 7134E son that is thick topped, soft sided and has a very moderate 78lb BW
- Ranks in the top 10% of the breed for BW and top 15% for CE epds
- \$10,000 Labatte dam offers outcross genetics for my long term customers



90

**CIRCLE G HEADLIGHT 106H**

BPRS1336975 KAG 106H 13-Feb-20  
 POLLED/SCURRED 7/8 PERCENTAGE

MRL MISSILE 138C  
**LRX IGNITION 222E**  
 IPU MS. LINER 56U 266Y

PROFIT  
**EARLY SUNSET JEWEL 98D**  
 EARLY SUNSET JEWEL 74U

COME AS U R RED ROCKET  
 MRL MISS 2423Z  
 SPRINGCREEK LINER 56U  
 IPU MS RANCH HAND 74U  
 WS PILGRIM H182U  
 WAGR PANARAMA 204Z  
 WHEATLAND BULL 460P  
 ANGUS/ANGUS

BW	88
Act WW	752
Adj 205	741
WPDA	3.55
CE	**

EPD'S CE 9 BW 2.1 WW 73 YW 105 MCE 4 MWWT 60 MILK 23 API 126

- Muscular Ignition son that offers a nice blend of calving ease and performance
- Full brother sold to Charlie Weisgerber last year and they really like the moderation and thickness of the bull



91

**CIRCLE G HANDYMAN 64H**

BPG1337264 KAG 64H 26-Jan-20 POLLED PUREBRED

MUIRHEADS TIME OUT 263B  
**MITCHELLS BLK TIME OUT 320F**  
 MITCHELLS BLK DOWNEY 112B

WLB GO DADDY 52Z 368D  
**CIRCLE G CUSTOMIZED 881F**  
 WHS CUSTOMIZED 96C

MUIRHEADS TIMEOUT 13Z  
 MUIRHEADS MACY 3W  
 DOWNEY 106Y  
 MITCHELLS BLACKY 138S  
 MRL EL TIGRE 52Z  
 BLACKSAND TESS 56A  
 WHS HANNAH ACDC 4A  
 WHS HANNAH APPLE 45A

BW	70
Act WW	796
Adj 205	786
WPDA	3.46
CE	****

EPD'S CE 15 BW -0.4 WW 73 YW 110 MCE 7 MWWT 64 MILK 28 API 138

- Ending the strong black Simmental section with a quality calving ease prospect...ranks in the top 2% of the breed for CE and top 3% for BW epds
- Sire came highly recommended from the good Mitchell Cattle Co. operation in BC...he has bred well here and is maturing into an impressive herd bull





**Sons of Continental**



Red Circle G First Class 1F - Sold to Danvil Stock Farm for \$15,000



Red Circle G Genesis 58G - Sold to Y Coulee Red Angus for \$11,750



Udder of Continental Daughter

92

**TER-RON CONTINENTAL 120D**

1900795 RPAH 120D February 08 2016

S A V HARVESTOR 0338  
S A V INTERNATIONAL 2020  
S A V EMBLYNETTE 5483

S A V HERITAGE 6295  
S A V EMBLYNETTE 7749  
S A V 8180 TRAVELER 004  
S A V EMBLYNETTE 7260  
RED SHODEREE DESTINY 114P  
RED TER-RON STARLET 8K  
RED TER-RON MAMBO 28K  
RED EV AMBER 28H

BW	98
Act WW	870
Adj 205	736
CE	**

RED TER-RON TOUCHDOWN 8S  
RED TER-RON AMBER 46W  
RED TER-RON AMBER 28P

EPD'S	CE -7	BW 4.1	WW 46	YW 101	MCE -4	MILK 29
-------	-------	--------	-------	--------	--------	---------

**SELLING FULL POSSESSION WITH A 1/4 INTEREST RETAINED BY CIRCLE G**

- Impressive Black/Red carrier, outcross sire that topped the 2017 Ter-Ron sale... combines the power and strong maternal genetics of SAV International with one of Ter-Ron's best donor cows who also produced the Bazinga bull
- Continental's attributes are numerous...he's massive bodied, easy fleshing and very sound with great feet and large testicles...ranks in the top 1% of the breed for WW & YW, top 4% for CW and top 8% for REA epds
- Red sons have been the features and the high selling Red Angus bulls in the last two sales and his black sons have also sold well
- Three calf crops of daughters are making their way into the cowherd and are certainly the right kind with lots of rib shape and correct, well structured udders...several have feature sons in this year's sale
- I've had numerous requests from breeders wanting to buy some semen or the bull himself, but have declined...it's only because his use here is becoming limited due to the numerous daughters coming into production, that he is offered for sale
- Continental is in his prime with lots of years ahead of him...Opportunity Knocks



93

**RED CIRCLE G HEADLINE 18H**

2161227 ZKT 18H January 13 2020

S A V INTERNATIONAL 2020  
TER-RON CONTINENTAL 120D  
RED TER-RON AMBER 46W

S A V HARVESTOR 0338  
S A V EMBLYNETTE 5483  
RED TER-RON TOUCHDOWN 8S  
RED TER-RON AMBER 28P  
RED VGW GAME PLAN 816  
RED SIX MILE LAKOTO 35W  
RED CROWFOOT OLE'S OSCAR 2042M  
RED CROWFOOT BLACKBIRD 2197M

BW	91
Act WW	850
Adj 205	769
CE	**

RED SIX MILE GAME FACE 164Y  
RED DIAMOND T BLACKBIRD 1692  
RED CROWFOOT BLACKBIRD 6125S

EPD'S	CE -4	BW 3.6	WW 56	YW 94	MCE 0	MILK 28
-------	-------	--------	-------	-------	-------	---------

- Headline is exactly the type of bull I hoped to create when I purchased Continental...he's got his sire's presence, is naturally wide based and thick with plenty of rib shape, fleshing ability and length of spine
- #4 indexing Angus bull for ADJ WW at 769lbs with no creep feed...ranks in the top 8% of the breed for WW & YW and top 30% for Milk epds
- 18H's dam was my pick and one of the high sellers at the 2017 Pinnacle Sale...her dam is the highly regarded Crowfoot 6152S female that sold through Red Roundup for \$25,000
- Game Face 164Y and Continental only intensify the maternal strength of this top prospect
- 1692 is a model female with huge rib shape and perfect feet... her first calf sold in the 2019 Red Roundup sale to Brylor Ranch and looks great



Dam 1692





94

**RED CIRCLE G HOTSHOT 56H**

2165176 ZKT 56H January 25 2020

S A V INTERNATIONAL 2020  
**TER-RON CONTINENTAL 120D**  
RED TER-RON AMBER 46W

RED BAR-E-L SOCKEYE 95S  
**RED CG BANE BERRY 35X**  
RED CG BANE BERRY 641S

S A V HARVESTOR 0338  
S A V EMBLYNETTE 5483  
RED TER-RON TOUCHDOWN 8S  
RED TER-RON AMBER 28P  
RED BAR-E-L APPROVAL 4L  
RED SSS GLORIA 874G  
RED DIMLER INDEED 446P  
RED BLUE SPRUCE BANE BERRY 33D

BW	83
Act WW	744
Adj 205	670
CE	**

EPD'S	CE -5	BW 3.1	WW 50	YW 86	MCE 0	MILK 29
-------	-------	--------	-------	-------	-------	---------

- Another Continental son that commands attention...he's thick over his top and deep bodied with lots of hair, eye appeal, balance and style
- Hotshot is the last calf from a CAA Elite Dam, 35X, who had a correct, square udder and was very productive...a son topped the 2016 sale at \$20,000 to Lonestone Farms and there are 3 very good daughters in the cowherd
- 56H's weaning data is subpar as 35X stifled herself and didn't produce her normal milk flow, but he is quietly working his way towards the top of the pen



Dam 35X



95

**RED CIRCLE G HANDSHAKE 63H**

2163756 ZKT 63H January 26 2020

S A V INTERNATIONAL 2020  
**TER-RON CONTINENTAL 120D**  
RED TER-RON AMBER 46W

RED BAR-E-L LPH GUIDELINE 155X  
**RED CIRCLE G BANE BERRY 326A**  
RED CG BANE BERRY 35X

S A V HARVESTOR 0338  
S A V EMBLYNETTE 5483  
RED TER-RON TOUCHDOWN 8S  
RED TER-RON AMBER 28P  
RED WHEEL ALLIANCE 22U  
RED LPH BESS 20P  
RED BAR-E-L SOCKEYE 95S  
RED CG BANE BERRY 641S

BW	94
Act WW	832
Adj 205	752
CE	**

EPD'S	CE -7	BW 4.2	WW 57	YW 98	MCE -1	MILK 27
-------	-------	--------	-------	-------	--------	---------

- Dark red, three quarter brother to Lot 94 that has the same quality, mass and thickness...genetic predictability is locked in
- The 326A dam, like her mother, is a CAA Elite Dam due to her high level of production...sons have sold to Coldstream Ranch and Grote Ranch
- Ranks in the top 4% of the breed for YW, top 5% for WW and top 10% for REA epds



Dam 326



96

**RED CIRCLE G HOMELAND 37H**

2164957 ZKT 37H January 20 2020

S A V INTERNATIONAL 2020  
**TER-RON CONTINENTAL 120D**  
RED TER-RON AMBER 46W

RED BLAIR'S IRON HIDE 630B  
**RED COMBEST YANKEE 623D**  
RED BLAIR'S YANKEE 158B

S A V HARVESTOR 0338  
S A V EMBLYNETTE 5483  
RED TER-RON TOUCHDOWN 8S  
RED TER-RON AMBER 28P  
RED WRIGHTS 832S IRON HIDE 4Z  
RED TOWAW DARLINE 15R  
RED RINGSTEAD KARGO 215U  
RED WSF MS YANKEE 13T 12W OSC

BW	90
Act WW	746
Adj 205	676
CE	**

EPD'S	CE -4	BW 3.1	WW 50	YW 80	MCE -3	MILK 23
-------	-------	--------	-------	-------	--------	---------

- A top Continental son that's stout, deep ribbed and hairy...traits that Continental consistently transmits to his progeny
- Dam is a female that was purchased from Lynn Combest but was bred by Blair.Ag and is backed by one of the best cow families in the breed...the 12W grandmother has produced several sires of note and sold in Denver to Rust Mountain View for \$50,000





## 97 RED CIRCLE G HERITAGE 7H

2160285 ZKT 7H January 07 2020

S A V INTERNATIONAL 2020  
**TER-RON CONTINENTAL 120D**  
 RED TER-RON AMBER 46W

S A V HARVESTOR 0338  
 S A V EMBLYNETTE 5483  
 RED TER-RON TOUCHDOWN 8S  
 RED TER-RON AMBER 28P  
 RED 5L FOREVER GRAND 5834  
 5 L QUEEN ESTON 101  
 CROWFOOT MAX 1743L  
 CROWFOOT LADY ERICA 4812P

BW	90
Act WW	828
Adj 205	725
CE	**

5L GRAND ALLIANCE 101-5226  
**RED CROWFOOT ERICA 8109S**  
 CROWFOOT ERICA 6028S

EPD'S	CE -3	BW 3.4	WW 48	YW 82	MCE 1	MILK 28
-------	-------	--------	-------	-------	-------	---------



Dam 8109

- A definite herd bull prospect with lots of dimension and body length...ranks in the top 20% of the breed for WW & YW epds
- Dam was one of my top picks out of the Crowfoot dispersal and has the quality and background to be a herd bull's mother...she has CAA Elite Dam status
- Maternal brothers have sold to Lobo Ranching, Crowfoot Cattle Co. and Josie Crawford



## 98 RED CIRCLE G HERMES 20H

2162848 ZKT 20H January 15 2020

S A V INTERNATIONAL 2020  
**TER-RON CONTINENTAL 120D**  
 RED TER-RON AMBER 46W

S A V HARVESTOR 0338  
 S A V EMBLYNETTE 5483  
 RED TER-RON TOUCHDOWN 8S  
 RED TER-RON AMBER 28P  
 XO CROWFOOT 0102X  
 RED XO CROWFOOT RACHEL 836U  
 RED BAR-E-L LPH GUIDELINE 155X  
 RED CG MISS BO 7101T

BW	88
Act WW	838
Adj 205	742
CE	**

RED XO CROWFOOT REBEL 2422Z  
**RED CIRCLE G MISS BO 608D**  
 RED CIRCLE G MISS BO 303A

EPD'S	CE -3	BW 3	WW 54	YW 88	MCE 2	MILK 28
-------	-------	------	-------	-------	-------	---------



Dam 608

- Another very good Continental son...the consistency of this sire group is impressive and very meaningful as uniformity translates into dollars when selling calves in the fall
- Dam is a high volume, level tided young cow with a son selling to Garth Titford and a daughter to Dobinson Vet Services
- Ranks in the top 10% of the breed for WW & YW, top 15% for CW and top 25% for REA epds



## 99 RED CIRCLE G HERALD 86H

2168682 ZKT 86H February 06 2020

S A V INTERNATIONAL 2020  
**TER-RON CONTINENTAL 120D**  
 RED TER-RON AMBER 46W

S A V HARVESTOR 0338  
 S A V EMBLYNETTE 5483  
 RED TER-RON TOUCHDOWN 8S  
 RED TER-RON AMBER 28P  
 RED BROWN COMMITMENT S7206  
 RED BROWN MS MAKIN HAY W7901  
 RED LSF MEW GAME CHANGER 1613Y  
 RED BENCHMARK BURGESS 936

BW	82
Act WW	718
Adj 205	677
CE	**

RED LSF RAB COMMITMENT 2792Z  
**RED BENCHMARK BURGESS 98'15**  
 RED BENCHMARK BURGESS 89'13

EPD'S	CE 0	BW 1.8	WW 45	YW 78	MCE 3	MILK 30
-------	------	--------	-------	-------	-------	---------



Dam 98'15

- An eye catching, moderate framed sire prospect that warrants a good look...ranks in the top 8% of the breed for WW, top 9% for YW, top 15% for REA and top 25% for Marbling epds
- Dam was acquired as my pick of Benchmark's bred heifers in 2016 and is sired by the proven calving ease and high marbling Commitment bull...her first son sold in the 2019 sale back to Benchmark Farms for \$8000





100

**RED CIRCLE G HUB 40H**

2176723 ZKT 40H January 22 2020

RED ML JUBILATION 938B  
**RED CIRCLE G FLAGSHIP 96F**  
 RED CROWFOOT MERLE 1307Y

RED TONGUERIVER JUBILATION  
 RED ML MISS LINETT 938W  
 RED HOWE DOMINOR 127U  
 RED YY MERLE 801U  
 RED DWAJO GLADIATOR 32L  
 RED YY MERLE 021X  
 RED OLE MALAKI 83W  
 RED SMOKY RUBY 70S

BW	78
Act WW	772
Adj 205	724
CE	***

RED OLE GLADIATOR 224Z  
**RED OLE 532D**  
 RED OLE RUBY 207Y

EPD'S	CE 6	BW 0.9	WW 47	YW 78	MCE 10	MILK 27
-------	------	--------	-------	-------	--------	---------

- First son to sell from the Flagship bull that was one of the feature bulls in the 2019 sale and sold to Hadwin Cattle Co.
- Flagship has the the influence of the outstanding 938W donor cow through his sire, Jubilation, and has sired his kind...dark red, big middled calves and was used even more in 2020
- 40H has a very moderate 78lb BW and would work well on heifers or cows
- Dam was purchased from Ole Farms and is backed by one of their top cow families



101

**RED CIRCLE G HEATH 28H**

2176722 ZKT 28H January 18 2020

RED ML JUBILATION 938B  
**RED CIRCLE G FLAGSHIP 96F**  
 RED CROWFOOT MERLE 1307Y

RED TONGUERIVER JUBILATION  
 RED ML MISS LINETT 938W  
 RED HOWE DOMINOR 127U  
 RED YY MERLE 801U  
 RED BASIN EXT 45T5  
 RED TOWAW BRANDINA 90M  
 RED K-C MR "E" 92N  
 RED HIDDEN LOIS 219L

BW	78
Act WW	746
Adj 205	669
CE	***

RED TOWAW MARVEL 404A  
**RED CINDER LOIS 216D**  
 RED CINDER LOIS 216S

EPD'S	CE 4	BW 1	WW 52	YW 83	MCE 8	MILK 24
-------	------	------	-------	-------	-------	---------

- Another dark red, soggy middled Flagship son that visitors have been picking out
- Ranks in the top 10% of the breed for WW & YW epds
- Dam is a tight uddered young cow and her first son sold to P&H Ranching Co.



102

**RED CIRCLE G HUGO 115H**

2173112 ZKT 115H March 02 2020

TER-RON PARK PLACE 18Y  
**RED TER-RON BACKDRAFT 169D**  
 RED TER-RON DIAMOND MIST 164Y

HF TIGER 5T  
 RED TER-RON GOLDIE 240L  
 RED LAZY MC KINGMAN 16W  
 RED TER-RON DIAMOND MIST 29S  
 XO CROWFOOT 0102X  
 RED XO CROWFOOT RACHEL 836U  
 RED BAR-E-L LPH GUIDELINE 155X  
 RED CG MISS BO 864U

BW	88
Act WW	720
Adj 205	794
CE	**

RED XO CROWFOOT REBEL 2422Z  
**RED CIRCLE G MISS BO 716E**  
 RED CIRCLE G MISS BO 334A

EPD'S	CE -2	BW 3.4	WW 54	YW 92	MCE 0	MILK 20
-------	-------	--------	-------	-------	-------	---------

- A Backdraft son that offers growth and performance in a long backed, muscular package...he'll add pounds to your calf crop
- #3 indexing bull for ADJ WW and ranks in the top 15% of the breed for WW & YW epds
- Very good young dam is a member of the Miss Bo cow family that is highly regarded here...correct udders are locked in



103

**RED CIRCLE G HARPER 22H**

2163609 ZKT 22H January 16 2020

S A V INTERNATIONAL 2020  
**TER-RON CONTINENTAL 120D**  
 RED TER-RON AMBER 46W

S A V HARVESTOR 0338  
 S A V EMBLYNETTE 5483  
 RED TER-RON TOUCHDOWN 8S  
 RED TER-RON AMBER 28P  
 XO CROWFOOT 0102X  
 RED XO CROWFOOT RACHEL 836U  
 RED CLAY COLT 21X  
 RED LONE STONE MARLENE 13X

BW	83
Act WW	774
Adj 205	711
CE	***

RED XO CROWFOOT REBEL 2422Z  
**RED CIRCLE G KARISSA 741E**  
 RED LONE STONE KARISSA 6B

EPD'S	CE -2	BW 3	WW 58	YW 95	MCE 3	MILK 25
-------	-------	------	-------	-------	-------	---------

- A dark red Continental son that commands attention with his length, depth and style...ranks in the top 2% of the breed for WW and top 4% for YW epds
- Dam is an attractive Rebel daughter out of Lonestone's high selling bred heifer in 2015 at \$8750
- Maternal brother was very popular in last year's sale and sold to S7 Ranch





Sire  
Decree

104

**RED CIRCLE G HORATIO 42H**

2165173 ZKT 42H January 22 2020

CROWFOOT MAX 1743L  
**RED CIRCLE G DECREE 93D**  
 RED CROWFOOT MISS BO 4088P  
 TER-RON CONTINENTAL 120D  
**RED CIRCLE G ELLIE 810F**  
 RED CIRCLE G ELLIE 533C

BASIN MAX 104J  
 GLADWALL LOVEMERE PET 8132  
 RIDGE BANDO 598-282ET  
 CFCC 6K  
 S A V INTERNATIONAL 2020  
 RED TER-RON AMBER 46W  
 RED XO CROWFOOT REBEL 2422Z  
 RED CG ELLIE 903W

BW	80
Act WW	782
Adj 205	769
CE	***

EPD'S	CE 1	BW 2.1	WW 53	YW 88	MCE 3	MILK 25
-------	------	--------	-------	-------	-------	---------

- 42H is the first son to sell from a Continental daughter and his quality has me excited about the production potential of these terrific females in years to come
- Decree has proven to be a sure fire calving ease sire and his sons have been very popular...his dam was a CAA Premier Dam that built an outstanding cow family here and was just retired last fall at 16 years of age
- #4 ADJ WW bull with an 80lb BW and ranks in the top 15% of the breed for WW & YW epds



Dam 843

105

**RED CIRCLE G HEADTURNER 92H**

2168680 ZKT 92H February 09 2020

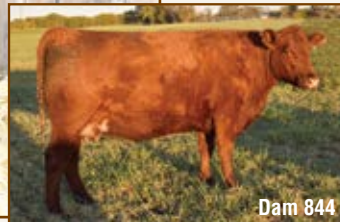
**RED CIRCLE G DECREE 93D**  
 RED BIEBER DEEP END B597  
**RED CIRCLE G LADY ERICA 843F**  
 RED CIRCLE G LADY ERICA 512C

RED BIEBER ROLLIN DEEP Y118  
 RED BIEBER LAURA 158W  
 RED XO CROWFOOT REBEL 2422Z  
 RED CROWFOOT LADY ERICA 8080U

BW	72
Act WW	698
Adj 205	740
CE	****

EPD'S	CE 7	BW 0.6	WW 48	YW 79	MCE 7	MILK 24
-------	------	--------	-------	-------	-------	---------

- Very good Decree son that is a true curve bender...72lb BW and indexed #12 for ADJ WW
- Ranks in the top 20% of the breed for WW & YW, top 25% for CE and top 35% for BW & REA epds
- Super two year old dam provides some fresh genetics through her sire, Deep End



Dam 844

106

**RED CIRCLE G HUSSAR 114H**

2170682 ZKT 114H February 16 2020

**RED CIRCLE G DECREE 93D**  
 RED BIEBER DEEP END B597  
**RED CIRCLE G MISS LINETT 844F**  
 RED ML MISS LINETT 938W

RED BIEBER ROLLIN DEEP Y118  
 RED BIEBER LAURA 158W  
 RED CROWFOOT 6253S  
 RED BAR-X MISS LINETT 151K

BW	75
Act WW	732
Adj 205	793
CE	****

EPD'S	CE 6	BW 0.9	WW 54	YW 90	MCE 6	MILK 24
-------	------	--------	-------	-------	-------	---------

- The Decree bull really matched up well with the Deep End daughters
- 114H started life at 75lbs and was the #1 bull for ADJ WW at 793lbs...with no creep feed and out of a 2 year old heifer
- The maternal grandmother is the 938W donor female at Circle G...she has drawn praise from everyone who sees her



Sire  
Racer

107

**RED CIRCLE G HELIX 13H**

2177802 ZKT 13H January 11 2020

RED DKF RAZOR 55C  
**RED DKF RACER 8E**  
 RED DKFE MISS ACE 84C  
 TER-RON CONTINENTAL 120D  
**CIRCLE G URRISAL 886F**  
 RED CROWFOOT URRISAL 2012Z

DKF ELIMINATOR 15A  
 DKF MISS NET WORTH 21A  
 RED SOO LINE POWER EYE 161X  
 RED BLU DAWN MISS ILLICIT 359Z  
 S A V INTERNATIONAL 2020  
 RED TER-RON AMBER 46W  
 RED CROWFOOT MOONSHINE 8081U  
 RED CROWFOOT URRISAL 6129S

BW	88
Act WW	796
Adj 205	754
CE	****

EPD'S	CE -1	BW 2.9	WW 51	YW 88	MCE 4	MILK 23
-------	-------	--------	-------	-------	-------	---------

- Another top bull from a Continental heifer sired by Racer 8E, the many times Champion and two time Agribition Champion for Shiloh Cattle Co.
- Cherry red with curve bending numbers...88lb BW and was #13 for ADJ WW at 754lbs
- Ranks in the top 15% of the breed for YW and top 25% for WW & Marbling epds





**108**

**RED CIRCLE G HOLT 51H**

2165178 ZKT 51H January 24 2020

RED CSF RED ZONE 1C  
**RED L83 T-K RED ZONE 48E**  
 RED L83 MORNING DEW  
 RED ML JUBILATION 938B  
**RED CIRCLE G ANNIE 735E**  
 RED CIRCLE G ANNIE 493B

RED C-BAR EVOLUTION 107Y  
 RED PFFR MS LOGAN 620  
 RED SIX MILE GAME FACE 164Y  
 RED L83 PRAIRIE LASS 414  
 RED TONGUE RIVER JUBILATION  
 RED ML MISS LINETT 938W  
 RED XO CROWFOOT REBEL 2422Z  
 RED HB ANNIE 165P

BW	69
Act WW	680
Adj 205	647
CE	****

EPD'S	CE 8	BW 0	WW 41	YW 71	MCE 10	MILK 24
-------	------	------	-------	-------	--------	---------

- A low BW son of the Red Zone bull that was purchased out of the T-K dispersal...Red Zone was a massive ribbed bull with lots of dimension but was unfortunately lost to injury
- Deluxe calving ease bull here with a 69lb BW and great numbers... ranks in the top 25% of the breed for BW & MCE, top 30% for CE, YW & Milk and top 35% for WW epds



**109**

**RED CIRCLE G HECTOR 67H**

2166537 ZKT 67H January 28 2020

**RED L83 T-K RED ZONE 48E**  
 RED TER-RON AMARILLO 1A  
**RED CIRCLE G THELMA 602D**  
 RED CG THELMA 119Y

TER-RON PARK PLACE 18Y  
 RED TER-RON LAURYN 139W  
 RED CROWFOOT 6885S  
 RED CG THELMA 946W

BW	88
Act WW	768
Adj 205	715
CE	***

EPD'S	CE 4	BW 1.1	WW 42	YW 76	MCE 4	MILK 22
-------	------	--------	-------	-------	-------	---------

- Long backed Red Zone with lots of rib and muscle shape
- Moderate BW and ranks in the top 20% of the breed for CE and top 35% for MCE and REA epds
- High volume, correct uddered dam stems from the same cow family as the Cargo 8C bull that bred so well at Shiloh Cattle Co.



**110**

**RED CIRCLE G HANS 80H**

2166534 ZKT 80H February 03 2020

**RED L83 T-K RED ZONE 48E**  
 RED XO CROWFOOT REBEL 2422Z  
**RED CIRCLE G EDLA 7106E**  
 RED CG EDLA 259Z

XO CROWFOOT 0102X  
 RED XO CROWFOOT RACHEL 836U  
 RED BAR-E-L LPH GUIDELINE 155X  
 RED BULLTOWN EDLA 80K

BW	82
Act WW	774
Adj 205	759
CE	***

EPD'S	CE 1	BW 2	WW 51	YW 87	MCE 4	MILK 26
-------	------	------	-------	-------	-------	---------

- Well made, balanced bull that would work on heifers or cows...he's got the stats to work in either pasture
- #8 for ADJ WW and ranks in the top 25% of the breed for YW, top 30% for Milk and top 35% for WW epds
- Attractive dam's first calf sold to Glenn Ball in last year's sale

**111**

**RED CIRCLE G HOMER 130H**

2172542 ZKT 130H February 29 2020

RED CSF RED ZONE 1C  
**RED L83 T-K RED ZONE 48E**  
 RED L83 MORNING DEW

RED C-BAR EVOLUTION 107Y  
 RED PFFR MS LOGAN 620  
 RED SIX MILE GAME FACE 164Y  
 RED L83 PRAIRIE LASS 414  
 RED WHEEL ALLIANCE 22U  
 RED LPH BESS 20P  
 RED BULLTOWN COPPER ROB 12J  
 RED BULLTOWN EDLA 32J

BW	88
Act WW	730
Adj 205	759
CE	***

EPD'S	CE 0	BW 1.7	WW 44	YW 74	MCE 2	MILK 25
-------	------	--------	-------	-------	-------	---------



- The youngest bull in the pen but he certainly holds his own...ranked #11 for ADJ WW
- High volume, square uddered dam has been very productive with sons selling to Stewart Ranch and CT Cattle
- Maternal sister is the dam of the good Lot 110 bull





Bar-E-L Natural Law 52Y

112

**PM NATURAL LAW 1'16**

1911679 FIRE ID January 27 2016

S A V BISMARCK 5682  
**BAR-E-L NATURAL LAW 52Y**  
 BAR-E-L MAGNOLIA 143K

HF EL TIGRE 28U  
**HF ANNIE 118X**  
 2HR ANNIE 11S

G A R GRID MAKER  
 S A V ABIGALE 0451  
 BAR-E-L MCC 365 ICON 20H  
 DOUBLE FOUR DUCHESS 12G  
 HF KODIAK 5R  
 HF ECHO 84R  
 LEACHMAN RIGHT TIME  
 DOUBLE AA ANNIE K 291'98

BW	80
Act WW	730
Adj 205	657
CE	***

EPD'S CE 11 BW 0.4 WW 39 YW 74 MCE 15 MILK 25

**SELLING FULL POSSESSION WITH A 1/4 INTEREST  
 RETAINED BY CIRCLE G**

- PM Natural Law 1'16 was the high selling Natural Law son in the 2017 Poplar Meadows sale and has matured into an impressive herd sire
- His sire, Natural Law 52Y, has certainly made a huge mark on the breed...his daughters are exceptional and have won the RBC Supreme Female Championship at Agribition three times
- 1'16's dam is rated by Tanya as one of the best cows in the very good Poplar Meadows herd...her pedigree is stacked with high maternal bulls such as Right Time and Kodiak
- Take note of 1'16's calving ease as he ranks in the top 1% of the breed for MCE, top 5% for CE and top 15% for BW epds
- Sons of 1'16 have been popular in my bull sales and have sold to some very good outfits
- Only because of my smaller herd size and with so many of his daughters coming into production, is 1'16 offered for sale...proven herd sires of this calibre aren't available to buy very often



Dam 527Z



113

**CIRCLE G HERSCHEL 17H**

2163612 ZKT 17H January 13 2020

**PM NATURAL LAW 1'16**  
 S A V BISMARCK 5682  
**BUCK LAKE MISS AVA 527Z**  
 BKLK MISS EXTEND 167X

G A R GRID MAKER  
 S A V ABIGALE 0451  
 S S OBJECTIVE T510 0T26  
 SCR MISS EXTEND 70528

BW	89
Act WW	848
Adj 205	729
CE	***

EPD'S CE 7 BW 2 WW 56 YW 100 MCE 11 MILK 24

- This year's set of PM Natural Law sons are very good and 17H is one of the best
- He's attracting attention for his depth of body, length and breed character
- First bull calf from an outstanding Bismarck daughter that was my pick and one of the high sellers in the Buck Lake dispersal...she has placed 4 excellent daughters in the CG cowherd (see Lot 117)
- Super epd profile...ranks in the top 7% of the breed for MCE, top 10% for CE, top 15% for Marbling, top 20% for Milk and top 30% for YW epds

114

**CIRCLE G HYATT 2H**

TWIN 2160286 ZKT 2H January 02 2020

**PM NATURAL LAW 1'16**  
 CROWFOOT EQUATION 5793R  
**CROWFOOT CJ BLACKBIRD 7726T**  
 CFCC 620K

O C C LEGACY 839L  
 CROWFOOT FORKS 755K  
 SITZ ALLIANCE 6595  
 C H BLACKBIRD 8645

BW	66
Act WW	760
Adj 205	653
CE	***

EPD'S CE 5 BW 2.2 WW 38 YW 70 MCE 7.5 MILK 28

- Take a close look at this good bull...he has much genetic merit and is probably the one I would choose to replace his sire
- His CAA Elite Dam is the kind you would use for the mold to make a hundred just like her...perfect feet and udder structure with a high level of production
- 7726T's full sister produced the \$42,000 Crowfoot 0102X bull and was also a high seller herself in the Crowfoot dispersal to Ole Farms...the Equation bull is one of best mature herd bulls I have ever seen and at 9 years of age his feet were superb
- 2H was a twin so his actual BW isn't very relevant but he could be used on heifers or cows





## 115 CIRCLE G HAMPTON 19H

2163611 ZKT 19H January 14 2020

BASIN PAYWEIGHT 1682  
SITZ PAYWEIGHT 749E  
SITZ FOREVER LADY 612T

BAR-E-L XCITEMENT 36X  
CIRCLE G ERROLLINE 224Z  
CIRCLE G ERROLLINE 915W

BASIN PAYWEIGHT 006S  
21AR O LASS 7017  
CONNEALY THUNDER  
SITZ FOREVER LADY 63M  
HF TIGER 5T  
BAR-E-L ENCHANTRESS 153N  
RINGSTEAD DATELINE 722S  
CIRCLE G ERROLLINE 531R

BW	86
Act WW	868
Adj 205	748
CE	***

EPD'S CE 4 BW 1.5 WW 53 YW 90 MCE 9 MILK 26

- Very complete, well balanced son of Sitz Payweight 749E...I've wanted to incorporate the Payweight genetics and welcomed the opportunity to lease 749E from Chapman Cattle Co.
- 749E was one of the high selling bulls in the 2018 Sitz Bull Sale...

he's an ET calf combining Payweight 1682 with one of the best cows at Sitz Ranch; a Pathfinder daughter of Connealy Thunder

- 19H had a moderate 86lb BW and ranked #14 for ADJ WW...his dam, 224, is one of the best BA cows at CG



## 116 CIRCLE G HUSTLE 45H

2165172 ZKT 45H January 23 2020

SITZ PAYWEIGHT 749E

DDA EMBLAZON 27C  
OLE MERLE 778C  
OLE MERLE 374Y

O C C EMBLAZON 854E  
D D A MELISA 824  
PINEBANK WAIGROUP 41/97  
CROWFOOT WJ MERLE 1438L

BW	89
Act WW	802
Adj 205	716
CE	***

EPD'S CE 3 BW 3 WW 53 YW 92 MCE 6 MILK 29

- Hustle 45H is thick from end to end with Angus character to burn...he ranks in the top 7% of the breed for Milk, top 15% for Marbling and top 30% for WW & YW epds
- Emblazon sired dam was acquired as my selection from the right to pick the 2015 born heifer calves at Ole Farms...she has matured into a very good cow with super udder type



## 117 CIRCLE G HIGHWAY 66H

2166538 ZKT 66H January 28 2020

SITZ PAYWEIGHT 749E

BAR-E-L XCITEMENT 36X  
CIRCLE G MISS AVA 557C  
BUCK LAKE MISS AVA 527Z

HF TIGER 5T  
BAR-E-L ENCHANTRESS 153N  
S A V BISMARCK 5682  
BKLK MISS EXTEND 167X

BW	79
Act WW	782
Adj 205	711
CE	****

EPD'S CE 7 BW 1 WW 56 YW 98 MCE 11 MILK 29

- Outstanding, curve bending 749E son that packs so many positive traits into an attractive package

- 79lb BW with plenty of dimension and rib shape...ranks in the top 7% of the breed for Milk, top 10% for WW, top 15% for YW, top 25% for BW and top 30% for CE epds
- Dam is a picture perfect female and is a maternal sister to the good Lot 113 bull







118

**CIRCLE G HURON 46H**

2176284 ZKT 46H January 23 2020

BAR-E-L NATURAL LAW 52Y  
**CIRCLE G FREEDOM 16F**  
 XO CROWFOOT BLACKBIRD 3330  
 S A V BISMARCK 5682  
**BUCK LAKE LEILA 801A**  
 BUCK LAKE LEILA 378Y

S A V BISMARCK 5682  
 BAR-E-L MAGNOLIA 143K  
 CHAPMAN MEMENTO 0505X  
 XO CROWFOOT BLACKBIRD 881  
 G A R GRID MAKER  
 S A V ABIGALE 0451  
 G A R PREDESTINED DDC  
 LEILAS PRIDE OF BUCK LAKE 5U

BW	80
Act WW	830
Adj 205	740
CE	***

EPD'S	CE 9	BW 0.4	WW 54	YW 90	MCE 9	MILK 23
-------	------	--------	-------	-------	-------	---------



Sire  
Freedom

- A high quality son of the 2019 sale high selling BA bull, Freedom 16F, who sold to Marj Veno and Murray McArthur for \$12,000...he's a Natural Law 52Y son out of one of the best females at Circle G of any breed or colour
- #17 ADJ WW bull out of the group of 70 and ranks in the top 15% of the breed for BW and top 20% for CE epds
- Dam is another very good Bismarck daughter...when touring cattle herds in Argentina in 2019, I noticed that many of the best cattle had a shot of Bismarck in them



119

**CIRCLE G HERDSMAN 98H**

2170685 ZKT 98H February 15 2020

BASIN PAYWEIGHT 1682  
**SITZ PAYWEIGHT 749E**  
 SITZ FOREVER LADY 612T  
 CHAPMAN MEMENTO 3607A  
**CIRCLE G ERICA 715E**  
 CIRCLE G ERICA 130Y

BASIN PAYWEIGHT 006S  
 21AR O LASS 7017  
 CONNEALY THUNDER  
 SITZ FOREVER LADY 63M  
 CHAPMAN MEMENTO 0505X  
 CHAPMAN G PRIDE 8013U  
 REMITALL SPARTAN 637U  
 CIRCLE G ERICA 929W

BW	90
Act WW	784
Adj 205	805
CE	**

EPD'S	CE 1	BW 3.1	WW 59	YW 104	MCE 7	MILK 29
-------	------	--------	-------	--------	-------	---------



Sire  
of Dam  
Memento

- A top Payweight 749E son that has been catching people's attention and for good reason...he oozes Angus quality
- #2 for ADJ WW at 805lbs with no creep feed and ranks in the top 10% of the breed for Milk, top 20% for YW and top 25% for WW epds
- High end Momento sired dam is out of a CAA Elite Dam and is backed by a very solid, reliable cow family



120

**CIRCLE G HUDSON 70H**

2166535 ZKT 70H January 29 2020

BASIN PAYWEIGHT 1682  
**SITZ PAYWEIGHT 749E**  
 SITZ FOREVER LADY 612T  
 SINCLAIR TIMELESS 8BA4  
**CIRCLE G ERICA 719E**  
 CIRCLE G ERICA 586C

BASIN PAYWEIGHT 006S  
 21AR O LASS 7017  
 CONNEALY THUNDER  
 SITZ FOREVER LADY 63M  
 SINCLAIR IN TIME 6BT39  
 SINCLAIR BLACKBIRD 2P8 7079  
 BAR-E-L XCITEMENT 36X  
 CIRCLE G ERICA 130Y

BW	74
Act WW	780
Adj 205	750
CE	****

EPD'S	CE 8	BW -0.6	WW 50	YW 90	MCE 9	MILK 33
-------	------	---------	-------	-------	-------	---------

- A sure fire heifer bull that has a lot of top and rib shape
- True curve bender with a 74lb BW and was #8 for ADJ WW...ranks in the top 1% of the breed for Milk, top 6% for BW, top 20% for CE and top 35% for WW & YW epds
- Backed by a very strong cow family...same cow line as Lots 119 & 125





121

**CIRCLE G HOMESTEAD 1H**

2160287 ZKT 1H January 01 2020

COLEMAN CHARLO 0256  
**HAMCO CHARLO 74F**  
 HAMCO LASS 103D

CHAPMAN MEMENTO 3607A  
**CIRCLE G LEILA 6125D**  
 BUCK LAKE LEILA 801A

O C C PAXTON 730P  
 BOHI ABIGALE 6014  
 S A V BISMARCK 5682  
 HAMCO LASS 281B  
 CHAPMAN MEMENTO 0505X  
 CHAPMAN G PRIDE 8013U  
 S A V BISMARCK 5682  
 BUCK LAKE LEILA 378Y

BW	88
Act WW	892
Adj 205	750
CE	***

EPD'S	CE 5	BW 2	WW 57	YW 99	MCE 4	MILK 29
-------	------	------	-------	-------	-------	---------

- First son to sell from Hamco Charlo 74F that was purchased as the high seller in the 2019 Hamco sale for \$10,000...the Coleman Charlo 0256 bull has had a major impact on the breed with numerous record high selling progeny and descendants at SAV and Coleman Angus
- Moderate BW of 88 lbs and was the #14 bull out of 70 calves for ADJ WW
- Dam is a broody, square uddered young cow that is a maternal sister to the good Lot 118 bull...her first son sold in last year's sale to the Bateman Ranch for \$6750



Sire  
Charlo 74F



122

**CIRCLE G HOLMES 32H**

2165180 ZKT 32H January 19 2020

COLEMAN CHARLO 0256  
**HAMCO CHARLO 74F**  
 HAMCO LASS 103D

CHAPMAN MEMENTO 3607A  
**CIRCLE G LUCY 809F**  
 CIRCLE G LUCY 5112C

O C C PAXTON 730P  
 BOHI ABIGALE 6014  
 S A V BISMARCK 5682  
 HAMCO LASS 281B  
 CHAPMAN MEMENTO 0505X  
 CHAPMAN G PRIDE 8013U  
 BAR-E-L XCITEMENT 36X  
 CIRCLE G LUCY 155Y

BW	74
Act WW	738
Adj 205	722
CE	****

EPD'S	CE 10	BW -0.1	WW 46	YW 80	MCE 8	MILK 29
-------	-------	---------	-------	-------	-------	---------

- A sleep all night calving ease bull with a lot of mass and rib shape... the heifers bred to 74F all calved unassisted
- 74lb BW and ranks in the top 4% of the breed for Milk and top 10% for CE & BW epds
- Dam is a very nice Memento daughter that is backed by a very good cow family with her grandmother achieving CAA Elite Dam status



123

**CIRCLE G HANK 30H**

2165181 ZKT 30H January 19 2020

S A V INTERNATIONAL 2020  
**TER-RON CONTINENTAL 120D**  
 RED TER-RON AMBER 46W

RED XO CROWFOOT REBEL 2422Z  
**RED CIRCLE G MISS LINETT 6182D**  
 RED ML MISS LINETT 938W

S A V HARVESTOR 0338  
 S A V EMBLYNETTE 5483  
 RED TER-RON TOUCHDOWN 8S  
 RED TER-RON AMBER 28P  
 XO CROWFOOT 0102X  
 RED XO CROWFOOT RACHEL 836U  
 RED CROWFOOT 6253S  
 RED BAR-X MISS LINETT 151K

BW	86
Act WW	786
Adj 205	707
CE	**

EPD'S	CE -1	BW 2.7	WW 57	YW 96	MCE 4	MILK 28
-------	-------	--------	-------	-------	-------	---------

- A black hided Continental son that's darn good...with 120D being a black/red carrier it's a given that there will be some black progeny but like their red siblings, they're packed with quality
- Hairy, deep ribbed, thick topped and sound describes 30H...he ranks in the top 1% of the breed for WW, top 2% for YW, top 10% for CW and top 15% for REA epds
- Dam is a daughter of the outstanding 938W donor cow



Sire  
Continental





124

**CIRCLE G HECTARE 48H**

2165170 ZKT 48H January 23 2020

S A V INTERNATIONAL 2020  
**TER-RON CONTINENTAL 120D**  
 RED TER-RON AMBER 46W

RED BAR-E-L LPH GUIDELINE 155X  
**RED CIRCLE G BANE BERRY 323A**  
 RED HB BANE BERRY 132K

S A V HARVESTOR 0338  
 S A V EMBLYNETTE 5483  
 RED TER-RON TOUCHDOWN 8S  
 RED TER-RON AMBER 28P  
 RED WHEEL ALLIANCE 22U  
 RED LPH BESS 20P  
 RED HB CHIEFDOM 103G  
 RED HB BANE BERRY 105H

BW	78
Act WW	756
Adj 205	675
CE	**

EPD'S	CE -1	BW 1.9	WW 45	YW 74	MCE 2	MILK 25
-------	-------	--------	-------	-------	-------	---------

- Another high quality black/red carrier that has much merit...he's stout with plenty of hair and a nice set of stats
- His mother is a CAA Elite Dam with a beautiful udder...sons have sold to Jess & Cindy Hudson, P&H Ranch and Kneehill Farms



125

**CIRCLE G HARDY 50H**

2165179 ZKT 50H January 23 2020

BASIN PAYWEIGHT 1682  
**SITZ PAYWEIGHT 749E**  
 SITZ FOREVER LADY 612T

S A V BISMARCK 5682  
**CIRCLE G ERICA 929W**  
 CIRCLE G ERICA 743T

BASIN PAYWEIGHT 006S  
 21AR O LASS 7017  
 CONNEALY THUNDER  
 SITZ FOREVER LADY 63M  
 G A R GRID MAKER  
 S A V ABIGALE 0451  
 K C F BENNETT TOTAL  
 CIRCLE G ERICA 323N

BW	80
Act WW	750
Adj 205	696
CE	***

EPD'S	CE 6	BW 1.2	WW 50	YW 89	MCE 10	MILK 28
-------	------	--------	-------	-------	--------	---------

- A Payweight son that will calve easy and his daughters will be outstanding...he's the 11th calf from the 12 year old 929W cow that I rate very high in the BA cowherd
- Ranks in the top 20% of the breed for WW & YW and top 25% for BW epds
- Maternal brothers have sold to Andy Rainforth, Darwin Fuller and Larry Nelner



126

**CIRCLE G HAYDEN 23H**

2176282 ZKT 23H January 16 2020

BAR-E-L NATURAL LAW 52Y  
**CIRCLE G FREEDOM 16F**  
 XO CROWFOOT BLACKBIRD 3330

CHAPMAN MEMENTO 3607A  
**CIRCLE G ERROLLINE 8102F**  
 CIRCLE G ERROLLINE 224Z

S A V BISMARCK 5682  
 BAR-E-L MAGNOLIA 143K  
 CHAPMAN MEMENTO 0505X  
 XO CROWFOOT BLACKBIRD 8810U  
 CHAPMAN MEMENTO 0505X  
 CHAPMAN G PRIDE 8013U  
 BAR-E-L XCITEMENT 36X  
 CIRCLE G ERROLLINE 915W

BW	68
Act WW	686
Adj 205	670
CE	****

EPD'S	CE 10	BW -0.1	WW 41	YW 66	MCE 10	MILK 23
-------	-------	---------	-------	-------	--------	---------

- 68lb BW Freedom son that will calve easy and his calves will grow and develop well
- Ranks in the top 10% of the breed for BW and top 25% for CE epds
- Two year old mother is a beautiful young cow and is a maternal sister to the good Lot 115 bull



127

**CIRCLE G HORNET 36H**

2176283 ZKT 36H January 20 2020

BAR-E-L NATURAL LAW 52Y  
**CIRCLE G FREEDOM 16F**  
 XO CROWFOOT BLACKBIRD 3330

CHAPMAN MEMENTO 3607A  
**CIRCLE G LUCY 819F**  
 CIRCLE G LUCY 372A

S A V BISMARCK 5682  
 BAR-E-L MAGNOLIA 143K  
 CHAPMAN MEMENTO 0505X  
 XO CROWFOOT BLACKBIRD 8810U  
 CHAPMAN MEMENTO 0505X  
 CHAPMAN G PRIDE 8013U  
 CIRCLE G YIELD 28Y  
 CIRCLE G LUCY 158Y

BW	70
Act WW	764
Adj 205	747
CE	****

EPD'S	CE 11	BW -0.3	WW 48	YW 77	MCE 11	MILK 25
-------	-------	---------	-------	-------	--------	---------

- Another low BW Freedom son that's quite a chunk and lots to offer
- 70lb BW and was the #8 ADJ WW bull...ranks in the top 9% of the breed for BW, top 10% for CE and top 20% for MCE epds





128

# CIRCLE G HOIST 116H

2170681 ZKT 116H February 19 2020

RED CSF RED ZONE 1C  
**RED L83 T-K RED ZONE 48E**  
RED L83 MORNING DEW

RED C-BAR EVOLUTION 107Y  
RED PFFR MS LOGAN 620  
RED SIX MILE GAME FACE 164Y  
RED L83 PRAIRIE LASS 414  
RED CROWFOOT MOONSHINE 8081U  
XO CROWFOOT BLACKBIRD 8810U  
RED 5L NORSEMAN KING 2291  
RED CROWFOOT GINGER 6101S

BW	89
Act WW	770
Adj 205	767
CE	**

XO CROWFOOT 0102X  
**XO CROWFOOT GINGER 2431Z**  
RED XO CROWFOOT GINGER 801U

EPD'S	CE 2	BW 1.9	WW 52	YW 86	MCE 1	MILK 23
-------	------	--------	-------	-------	-------	---------



Dam 2431

- Finishing off the catalog with a very good black Red Zone son that has a nice blend of calving ease and performance
- #6 ADJ WW bull with a moderate 89lb BW
- Square uddered, high quality Crowfoot dam sired by the \$42,000 0102X bull

## Cow Power at Circle G

Females for Sale at the Farm - Purebred & Commercial

The Circle G cowherd is functional, sound and highly productive.



Be assured that every Circle G bull is backed by a quality dam.



**60G (RED SIMMENTAL)**  
Sold to Chittick Family Farm for \$17,000



**58G (RED ANGUS)**  
Sold to Y Coulee Red Angus for \$11,750

## Some 2020 Sale Highlights



**54G (BLACK SIMMENTAL)**  
Sold to Colter Ellefson for \$9000



**98G (BLACK ANGUS)**  
Sold to Shawn, Jennifer & Hardy Fischer for \$7250





## BENEFITS OF THE P&H RANCHING & CIRCLE G BULL SALE

- **One Stop Shopping... Quality Charolais, Red & Black Simmentals and Red & Black Angus Bulls**
- **No bulls have been sold prior to this sale**
- **Updated weights & scrotal measurements will be available sale day**
- **All bulls will be double vaccinated with "FUSOGARD" for the prevention of footrot**
- **Bulls are developed on high roughage rations to ensure their future soundness & fertility**
- **Sale hospitality at its finest...showing customers our appreciation for their continued support**
- **We strive to provide great customer service...buyer satisfaction guaranteed NFAC**
- **Quality bulls sell in all price ranges to fit any budget.**



## BENEFIT FROM CROSS BREEDING



## IT ONLY MAKES SENSE AND DOLLARS

### TERMS & CONDITIONS OF THIS SALE

1. **TERMS** – The terms of the sale are cash or cheque payable at par in Canadian funds to the sale clerk on sale day unless otherwise previously arranged with the sellers prior to the sale. No releases will be given until satisfactory settlement has been made.
2. **BIDS** – Each animal will be sold to the highest bidder.
3. **DISPUTES** – In case of disputes, bidding will be reopened between the parties involved. If no further bid is made, the buyer will be the person from whom the auctioneer accepted the last bid. The auctioneer's decision in such matter will be final.
4. **ANNOUNCEMENTS** – The information contained in this catalogue is believed to be true and accurate. Announcements at the sale by the owner, auctioneer or sales management will take precedence over the printed matter in this sale catalogue.
5. **PURCHASERS RISK** – Each animal becomes the risk of the purchasers as soon as sold.
6. **CERTIFICATE OF REGISTRATION** – The proper registration paper from the CCA, CAA and CSA will be duly transferred and furnished to the buyer for each animal after settlement has been made.
7. **GUARANTEE** – All bulls carry the standard breeding guarantee as specified by the applicable Canadian breed Associations. Bulls are guaranteed to be structurally sound and will have passed a semen test by a qualified Veterinarian prior to sale day or delivery. In the unlikely event of a dispute, the regular terms and conditions of the standard breed Associations will apply. At no time shall the seller's liability exceed the purchase price of the animal in question.
8. **ACCIDENTS/LIABILITY** – Every precaution will be made to protect the safety of those attending the sale. All persons attending the sale at their own risk. The seller, facility, owner & other persons involved with this sale assume no liability, legal or otherwise for any accidents that occur in, on or about the premises.
9. **INSURANCE** – Ownership risk to purchaser commences when the Auctioneer's hammer falls. Livestock coverage will be available at the clerk's desk from the appointed representative sale day. It is mandatory that all bulls returning to the seller's premises be insured at the buyer's expense.
10. **DELIVERY** – The sellers will deliver bulls free of charge within a 300 mile radius. Delivery beyond will be at cost. All bulls will be delivered within 30 days after the sale date.
11. **P&H Ranching & Circle G Simmentals & Angus** reserve the right to collect semen on any bull sold for in herd use. This semen will be collected at the buyer's convenience and at the seller's expense.
12. **SOLICITING** - It is unethical for anyone to promote, advertise or arrange the sale of any cattle, other than those in the sale, on the sale premises.



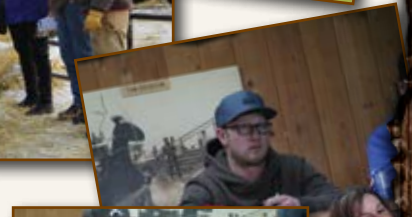
# 2020

## Thank You to all our Bull Sale & off Farm Buyers



- AMIE CEASOR, AB
- ARROWWOOD COLONY, AB
- ATTEMA FARMS LTD., AB
- BATEMAN RANCH - BILL BATEMAN, AB
- BOB FRASER, AB
- BRIAN KNIGHT, AB
- BRIAN QUAST, AB
- BRUCE HOGG, AB
- CHARLES WEISGERBER, AB
- CHASE BENNETT & MAKENZIE ROWLEY, AB
- CHESHIRE FARMS, AB
- CHITTICK FAMILY FARMS, AB
- COLTART FARMS, MB
- COLTER ELLEFSON, AB
- CRUIKSHANK FARMS, AB
- CT CATTLE CO. LTD. - RICK ABT, AB
- DALE NYLUND, AB
- DARWIN & DYLAN FULLER, AB
- DARYL HILL, AB
- DAVID FOAT, AB
- DDC CATTLE COMPANY - DAVIS COX, AB
- DEBRAH L OPSAHL-MACDONALD, AB
- DIAMOND 4 FARMS - TYLER NEWSHAM, AB
- DIAMOND RIO CATTLE, AB
- DIAMOND T CATTLE CO., AB
- DOBINSON VET SERVICES, AB
- DONALD TRIGG, AB
- DOUG CRAWFORD, AB
- DREW MEADOWS LTD., AB
- EAGLE VALLEY FARMS, AB
- F. NESTER RANCHING, AB
- FACEOFF FARMS, AB
- FERRYBANK COLONY, AB
- FIONA BRIDY, AB
- G&R PARSONS FARMS LTD., AB
- GARTH & MARLA TITFORD, AB
- GLENN & CHAD BALL, AB
- GLENN AMENDT, AB
- GORDON & ROSEMARY CHURCH, AB
- GORDON HARROWING, AB
- GRANT DAINES, AB
- GREG PENNOCK, AB
- GROTE RANCH, AB
- HEART OF THE VALLEY ANGUS, BC
- HEART VALLEY ANGUS, AB
- HENRY OPENDRIES, AB
- HIGHWAY 21 FEEDERS - ED MILLAR, AB
- HOMEPLACE RANCH, AB
- HOWE RANCHES, AB
- HUNT LEGACY FARMS, AB
- INDIAN RIVER RANCH, AB
- JAFFARY FARMS, AB
- JAMES SMITH & SONS, AB

- JIM & BETH WELESCHUK, AB
- JOHNSON'S S-J RANCH, AB
- JOSIE CRAWFORD, AB
- KEITH & LYNN BARNES, AB
- KEN BENIUK, AB
- KENNY SIDNER, AB
- KENT STORMOEN, AB
- KEVIN BYSTERVELD, AB
- KIM LUBBERS, AB
- LENNOR FARMS LTD., AB
- LG FARMS, AB
- LOBO RANCHING - DAVE LOWE, AB
- LONE STONE FARMS, AB
- LORI GORDON, AB
- LYLE & ELIZABETH VERHAEGHE, AB
- M&P RANCHES - DEE MCDUGALL
- MADDOX RANCH - STEVE MADDOX, AB
- MARK BERTAGNOLLI, AB
- MARK BIGGS, AB
- MASON HOFER, AB
- MCMILLEN RANCHING , SK
- MEDICINE LAKE GRAZING, AB
- MICHAEL BRENNIS, AB
- MURPHY LAND & CATTLE - JIM MURPHY, AB
- N OVER DIAMOND CATTLE-DAVID NELSON, AB
- NEWELL CATTLE GRAZING, AB
- NEWSOME FARMS, AB
- OAK HILL FARMS, SK
- REY CREEK RANCH, BC
- ROBERT RILEY, AB
- RON SCHMIDT, AB
- RUSSELL GALLELLI
- S7 RANCH - DUNCAN STEWART, AB
- SHANE SOROKA, AB
- SHAWN & JENNIFER FISCHER, AB
- STEWART RANCHING, AB
- SWINGING 7 RANCH - JOHN SCOTT, AB
- TOM BRAGG, AB
- TONY & KATHY KAMLAH, AB
- TRI K SIMMENTALS, AB
- TROY OGLE, AB
- TYSON SIEGEL, AB
- VETERAN COLONY, AB
- WAYNE GREEN, AB
- WESTWICK RANCHING, AB
- WHITLOW FARMS LTD., AB
- WJ SIMMENTALS, AB
- Y COULEE RED ANGUS, SK



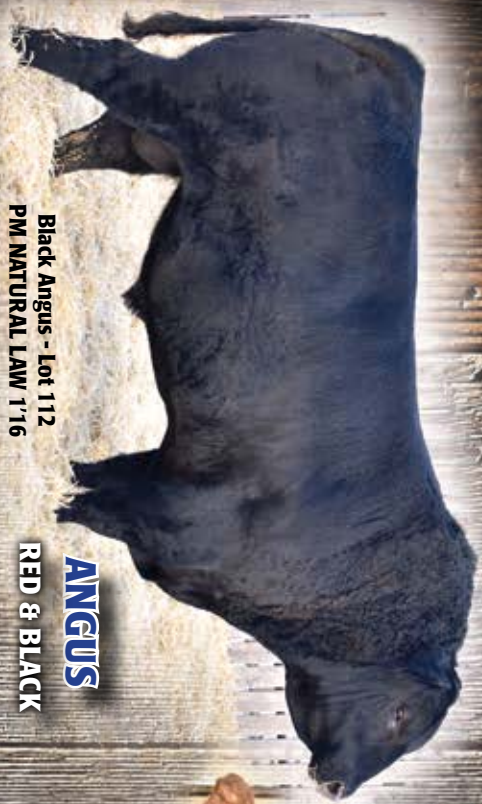
Your support is greatly appreciated



**P&H RANCHING CO. LTD.**  
36048 C&E Trail  
Red Deer County, AB T4G 0G9



**CHAROLAIS**  
2 YEAR OLDS



Black Angus - Lot 112  
PM NATURAL LAW 1'16

**ANGUS**  
RED & BLACK



Lot 71



Red Simmental - Lot 53  
CIRCLE C HEAT WAVE 10H

**SIMMENTAL**  
RED & BLACK YEARLINGS

**128 BULLS SELL**  
**SATURDAY, FEBRUARY 20**  
INNISFAIL AUCTION MARKET  
**P&H RANCHING CO.**  
and  
**CIRCLE C SIMMENTALS**  
**& ANGUS**

